

## THAP10 Antibody

Catalog No: #43540

Orders: [order@signalwayantibody.com](mailto:order@signalwayantibody.com)Support: [tech@signalwayantibody.com](mailto:tech@signalwayantibody.com)

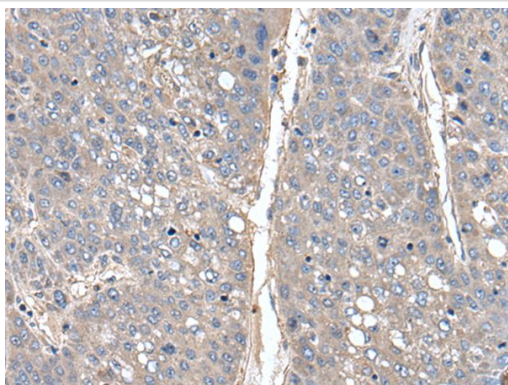
## Description

Product Name	THAP10 Antibody
Host Species	Rabbit
Clonality	Polyclonal
Purification	Antigen affinity purification
Applications	IHC
Species Reactivity	Hu
Specificity	The antibody detects endogenous levels of total THAP10 protein.
Immunogen Type	protein
Immunogen Description	Full length fusion protein
Target Name	THAP10
Accession No.	Swiss-Prot#: Q9P2Z0NCBI Gene ID: 56906
Uniprot	Q9P2Z0
GeneID	56906;
Concentration	1mg/ml
Formulation	Rabbit IgG in pH7.4 PBS, 0.05% NaN <sub>3</sub> , 40% Glycerol.
Storage	Store at -20°C

## Application Details

Immunohistochemistry: 1: 30-150

## Images



The image on the left is immunohistochemistry of paraffin-embedded Human liver cancer tissue using THAP10 Antibody at dilution 1/40, on the right is treated with fusion protein. (Original magnification: x200)

## Background

This gene encodes a member of a family of proteins sharing an N-terminal Thanatos-associated domain. The Thanatos-associated domain contains a zinc finger signature similar to DNA-binding domains. This gene is part of a bidirectional gene pair on the long arm of chromosome 15 that is regulated by estrogen and may play a role in breast cancer.

---

Note: This product is for in vitro research use only