

COMMD10 Antibody

Catalog No: #43551



Orders: order@signalwayantibody.com
Support: tech@signalwayantibody.com

Description

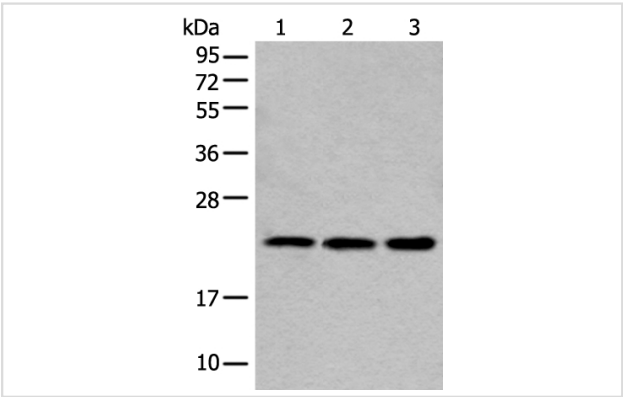
Product Name	COMMD10 Antibody
Host Species	Rabbit
Clonality	Polyclonal
Purification	Antigen affinity purification
Applications	IHC WB
Species Reactivity	Hu
Specificity	The antibody detects endogenous levels of total COMMD10 protein.
Immunogen Type	protein
Immunogen Description	Fusion protein of human COMMD10
Target Name	COMMD10
Other Names	PTD002
Accession No.	Swiss-Prot#: Q9Y6G5NCBI Gene ID: 51397
Uniprot	Q9Y6G5
GeneID	51397;
Calculated MW	23kd
Concentration	0.6mg/ml
Formulation	Rabbit IgG in pH7.4 PBS, 0.05% NaN3, 40% Glycerol.
Storage	Store at -20°C

Application Details

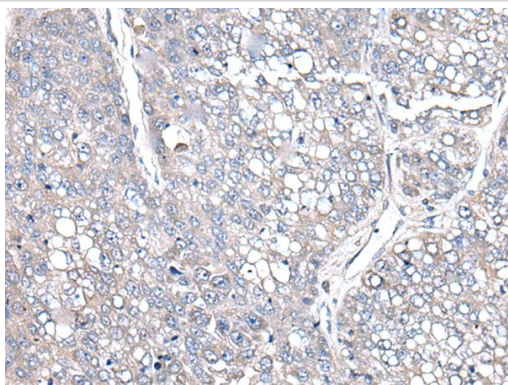
Western blotting: 1:200-1000

Immunohistochemistry: 1: 20-100

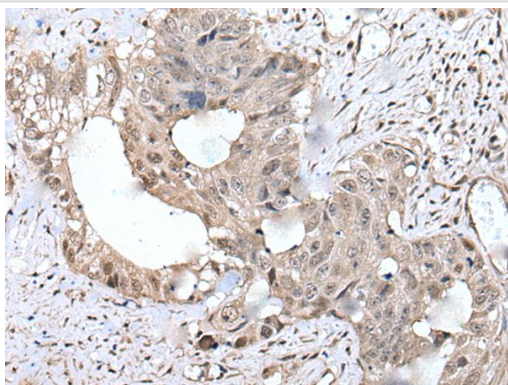
Images



Gel: 12%SDS-PAGE
Lysate: 40 µg, Lane 1-3: HEPG2,293T and Hela cell lysates,
Primary antibody:COMMD10 antibody at dilution 1/250,
Secondary antibody: Goat anti rabbit IgG at 1/8000 dilution,
Exposure time: 1 minute



The image on the left is immunohistochemistry of paraffin-embedded Human liver cancer tissue using COMMD10 Antibody at dilution 1/30, on the right is treated with fusion protein. (Original magnification: x200)



The image on the left is immunohistochemistry of paraffin-embedded Human colorectal cancer tissue using COMMD10 Antibody at dilution 1/30, on the right is treated with fusion protein. (Original magnification: x200)

Background

May modulate activity of cullin-RING E3 ubiquitin ligase (CRL) complexes (PubMed:21778237). May down-regulate activation of NF-kappa-B (PubMed:15799966).

Note: This product is for in vitro research use only