

DPM1 Antibody

Catalog No: #43564

Orders: order@signalwayantibody.comSupport: tech@signalwayantibody.com

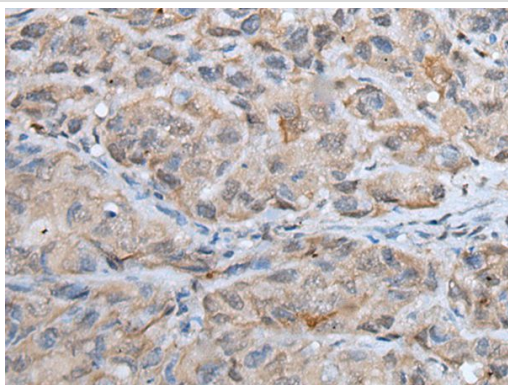
Description

Product Name	DPM1 Antibody
Host Species	Rabbit
Clonality	Polyclonal
Purification	Antigen affinity purification
Applications	IHC
Species Reactivity	Hu
Specificity	The antibody detects endogenous levels of total DPM1 protein.
Immunogen Type	protein
Immunogen Description	Full length fusion protein
Target Name	DPM1
Other Names	MPDS; CDGIE
Accession No.	Swiss-Prot#: O60762NCBI Gene ID: 8813
Uniprot	O60762
GeneID	8813;
Concentration	0.5mg/ml
Formulation	Rabbit IgG in pH7.4 PBS, 0.05% NaN ₃ , 40% Glycerol.
Storage	Store at -20°C

Application Details

Immunohistochemistry: 1: 20-100

Images



The image on the left is immunohistochemistry of paraffin-embedded Human breast cancer tissue using DPM1 Antibody at dilution 1/30, on the right is treated with fusion protein. (Original magnification: x200)

Background

Dolichol-phosphate mannose (Dol-P-Man) serves as a donor of mannosyl residues on the luminal side of the endoplasmic reticulum (ER). Lack of Dol-P-Man results in defective surface expression of GPI-anchored proteins. Dol-P-Man is synthesized from GDP-mannose and dolichol-phosphate on the cytosolic side of the ER by the enzyme dolichyl-phosphate mannosyltransferase. Human DPM1 lacks a carboxy-terminal transmembrane domain and signal sequence and is regulated by DPM2. Mutations in this gene are associated with congenital disorder of glycosylation type Ie. Alternative

splicing results in multiple transcript variants.?

Note: This product is for in vitro research use only