

LASP1 Antibody

Catalog No: #43565



Orders: order@signalwayantibody.com
Support: tech@signalwayantibody.com

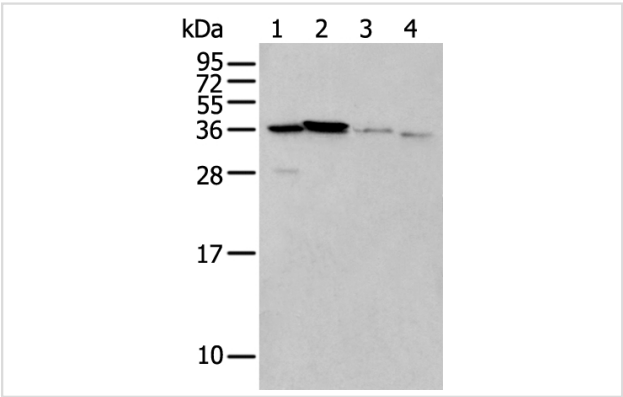
Description

Product Name	LASP1 Antibody
Host Species	Rabbit
Clonality	Polyclonal
Purification	Antigen affinity purification
Applications	IHC WB
Species Reactivity	Hu Ms
Specificity	The antibody detects endogenous levels of total LASP1 protein.
Immunogen Type	protein
Immunogen Description	Full length fusion protein
Target Name	LASP1
Other Names	MLN50; Lasp-1
Accession No.	Swiss-Prot#: Q14847NCBI Gene ID: 3927
Uniprot	Q14847
GeneID	3927;
Calculated MW	30kd
Concentration	0.8mg/ml
Formulation	Rabbit IgG in pH7.4 PBS, 0.05% NaN3, 40% Glycerol.
Storage	Store at -20°C

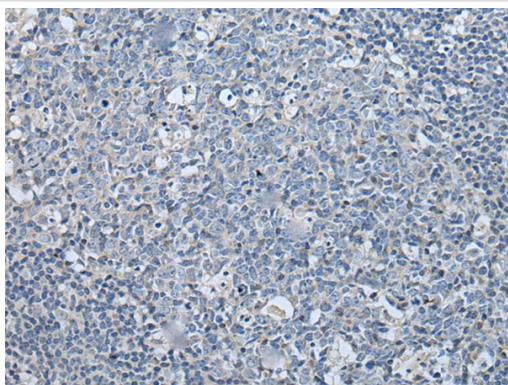
Application Details

Western blotting: 1:200-1000
Immunohistochemistry: 1: 20-100

Images



Gel: 8%SDS-PAGE
Lysate: 40 µg, Lane 1-4: Hela and 293T cell, Mouse brain tissue and Human kidney tissue lysates,
Primary antibody: LASP1 antibody at dilution 1/350,
Secondary antibody: Goat anti rabbit IgG at 1/8000 dilution,
Exposure time: 10 seconds



The image on the left is immunohistochemistry of paraffin-embedded Human tonsil tissue using LASP1 Antibody at dilution 1/35, on the right is treated with fusion protein. (Original magnification: x200)

Background

This gene encodes a member of a subfamily of LIM proteins, characterized by a LIM motif and a domain of Src homology region 3, and also a member of the nebulin family of actin-binding proteins. The encoded protein is a cAMP and cGMP dependent signaling protein and binds to the actin cytoskeleton at extensions of the cell membrane. The encoded protein has been linked to metastatic breast cancer, hematopoietic tumors such as B-cell lymphomas, and colorectal cancer.

Note: This product is for in vitro research use only