

## ZBPB Antibody

Catalog No: #43583

Orders: [order@signalwayantibody.com](mailto:order@signalwayantibody.com)Support: [tech@signalwayantibody.com](mailto:tech@signalwayantibody.com)

## Description

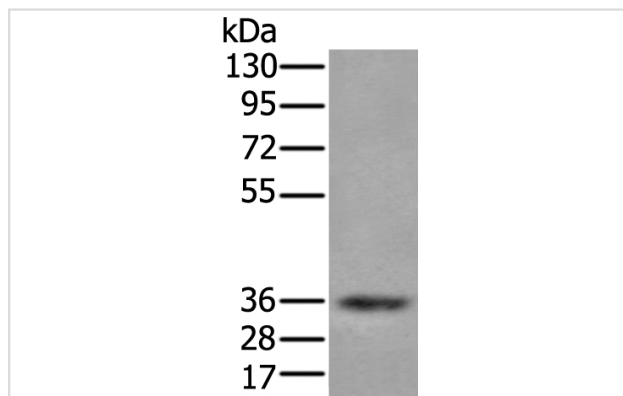
Product Name	ZBPB Antibody
Host Species	Rabbit
Clonality	Polyclonal
Purification	Antigen affinity purification
Applications	IHC WB
Species Reactivity	Hu
Specificity	The antibody detects endogenous levels of total ZBPB protein.
Immunogen Type	protein
Immunogen Description	Fusion protein of human ZBPB
Target Name	ZBPB
Other Names	ZBPB1
Accession No.	Swiss-Prot#: Q9BS86NCBI Gene ID: 11055
Uniprot	Q9BS86
GeneID	11055;
Calculated MW	40kd
Concentration	0.4mg/ml
Formulation	Rabbit IgG in pH7.4 PBS, 0.05% NaN <sub>3</sub> , 40% Glycerol.
Storage	Store at -20°C

## Application Details

Western blotting: 1:200-1000

Immunohistochemistry: 1: 20-100

## Images



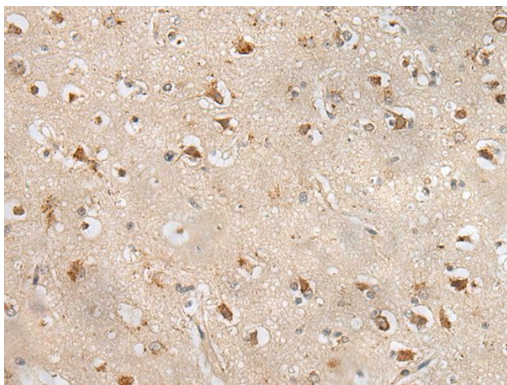
Gel: 8%SDS-PAGE

Lysate: 40 µg, Lane: Human testis tissue lysate,

Primary antibody: ZBPB antibody at dilution 1/200,

Secondary antibody: Goat anti rabbit IgG at 1/8000 dilution,

Exposure time: 30 seconds



The image on the left is immunohistochemistry of paraffin-embedded Human brain tissue using ZBPB Antibody at dilution 1/30, on the right is treated with fusion protein. (Original magnification: x200)

## Background

ZBPB is one of several proteins that are thought to participate in secondary binding between acrosome-reacted sperm and the egg-specific extracellular matrix, the zona pellucida (McLeskey et al., 1998 [PubMed 9378618]). May be implicated in gamete interaction during fertilization.

Note: This product is for in vitro research use only