

## UFM1 Antibody

Catalog No: #43613

Orders: [order@signalwayantibody.com](mailto:order@signalwayantibody.com)Support: [tech@signalwayantibody.com](mailto:tech@signalwayantibody.com)

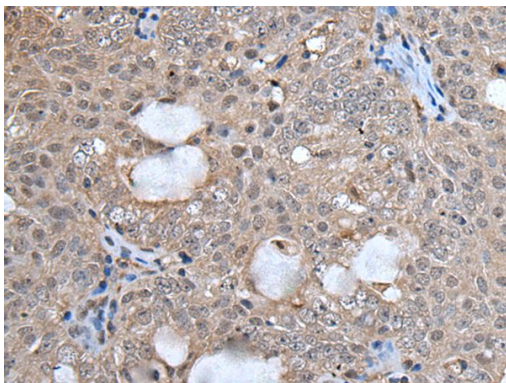
## Description

Product Name	UFM1 Antibody
Host Species	Rabbit
Clonality	Polyclonal
Purification	Antigen affinity purification
Applications	IHC
Species Reactivity	Hu Ms
Specificity	The antibody detects endogenous levels of total UFM1 protein.
Immunogen Type	protein
Immunogen Description	Full length fusion protein
Target Name	UFM1
Other Names	BM-002; C13orf20
Accession No.	Swiss-Prot#: P61960NCBI Gene ID: 51569
Uniprot	P61960
GeneID	51569;
Concentration	0.7mg/ml
Formulation	Rabbit IgG in pH7.4 PBS, 0.05% NaN <sub>3</sub> , 40% Glycerol.
Storage	Store at -20°C

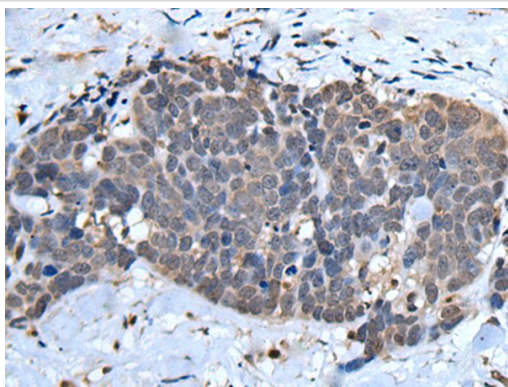
## Application Details

Immunohistochemistry: 1: 20-100

## Images



The image on the left is immunohistochemistry of paraffin-embedded Human ovarian cancer tissue using UFM1 Antibody at dilution 1/30, on the right is treated with fusion protein. (Original magnification: x200)



The image on the left is immunohistochemistry of paraffin-embedded Human thyroid cancer tissue using UFM1 Antibody at dilution 1/30, on the right is treated with fusion protein. (Original magnification: x200)

## Background

UFM1 is a ubiquitin-like protein that is conjugated to target proteins by E1-like activating enzyme UBA5 (UBE1DC1; MIM 610552) and E2-like conjugating enzyme UFC1 (MIM 610554) in a manner analogous to ubiquitylation (see UBE2M; MIM 603173) (Komatsu et al., 2004 [PubMed 15071506]).

Note: This product is for in vitro research use only