

## SLC24A5 Antibody

Catalog No: #43635

Orders: [order@signalwayantibody.com](mailto:order@signalwayantibody.com)Support: [tech@signalwayantibody.com](mailto:tech@signalwayantibody.com)

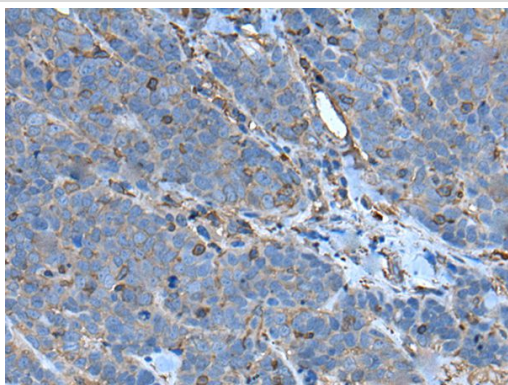
## Description

Product Name	SLC24A5 Antibody
Host Species	Rabbit
Clonality	Polyclonal
Purification	Antigen affinity purification
Applications	IHC
Species Reactivity	Hu
Specificity	The antibody detects endogenous levels of total SLC24A5 protein.
Immunogen Type	peptide
Immunogen Description	Synthetic peptide of human SLC24A5
Target Name	SLC24A5
Other Names	JSX; OCA6; NCKX5; SHEP4
Accession No.	Swiss-Prot#: Q71RS6NCBI Gene ID: 283652
Uniprot	Q71RS6
GeneID	283652;
Concentration	1.4mg/ml
Formulation	Rabbit IgG in pH7.4 PBS, 0.05% NaN <sub>3</sub> , 40% Glycerol.
Storage	Store at -20°C

## Application Details

Immunohistochemistry: 1: 30-150

## Images



The image on the left is immunohistochemistry of paraffin-embedded Human thyroid cancer tissue using SLC24A5 Antibody at dilution 1/50, on the right is treated with synthetic peptide. (Original magnification: x200)

## Background

This gene is a member of the potassium-dependent sodium/calcium exchanger family and encodes an intracellular membrane protein with 2 large hydrophilic loops and 2 sets of multiple transmembrane-spanning segments. Sequence variation in this gene has been associated with differences in skin pigmentation.

---

Note: This product is for in vitro research use only