

## SMC5 Antibody

Catalog No: #43637

Orders: [order@signalwayantibody.com](mailto:order@signalwayantibody.com)Support: [tech@signalwayantibody.com](mailto:tech@signalwayantibody.com)

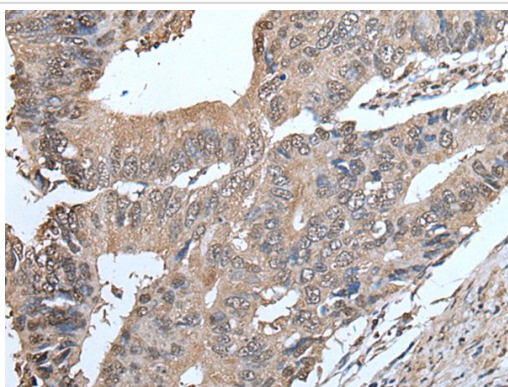
## Description

|                       |   |
|-----------------------|---|
| Product Name          | SMC5 Antibody   |
| Host Species          | Rabbit  |
| Clonality             | Polyclonal  |
| Purification          | Antigen affinity purification                                   |
| Applications          | IHC   |
| Species Reactivity    | Hu Ms   |
| Specificity           | The antibody detects endogenous levels of total SMC5 protein.   |
| Immunogen Type        | peptide   |
| Immunogen Description | Synthetic peptide of human SMC5                                 |
| Target Name           | SMC5  |
| Other Names           | SMC5L1  |
| Accession No.         | Swiss-Prot#: Q8IY18NCBI Gene ID: 23137                          |
| Uniprot               | Q8IY18  |
| GeneID                | 23137;  |
| Concentration         | 0.8mg/ml  |
| Formulation           | Rabbit IgG in pH7.4 PBS, 0.05% NaN <sub>3</sub> , 40% Glycerol. |
| Storage               | Store at -20°C  |

## Application Details

Immunohistochemistry: 1: 20-100

## Images



The image on the left is immunohistochemistry of paraffin-embedded Human colorectal cancer tissue using SMC5 Antibody at dilution 1/30, on the right is treated with synthetic peptide. (Original magnification: x200)

## Background

Core component of the SMC5-SMC6 complex, a complex involved in repair of DNA double-strand breaks by homologous recombination. The complex may promote sister chromatid homologous recombination by recruiting the SMC1-SMC3 cohesin complex to double-strand breaks. The complex is required for telomere maintenance via recombination in ALT (alternative lengthening of telomeres) cell lines and mediates sumoylation of shelterin complex (telosome) components which is proposed to lead to shelterin complex disassembly in ALT-associated PML bodies (APBs). Required for

recruitment of telomeres to PML nuclear bodies. Required for sister chromatid cohesion during prometaphase and mitotic progression; the function seems to be independent of SMC6.

---

Note: This product is for in vitro research use only