

## TNMD Antibody

Catalog No: #43641

Orders: [order@signalwayantibody.com](mailto:order@signalwayantibody.com)Support: [tech@signalwayantibody.com](mailto:tech@signalwayantibody.com)

## Description

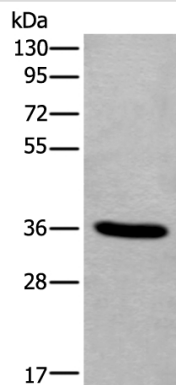
Product Name	TNMD Antibody
Host Species	Rabbit
Clonality	Polyclonal
Purification	Antigen affinity purification
Applications	IHC WB
Species Reactivity	Hu
Specificity	The antibody detects endogenous levels of total TNMD protein.
Immunogen Type	peptide
Immunogen Description	Synthetic peptide of human TNMD
Target Name	TNMD
Other Names	TEM; CHM1L; BRICD4
Accession No.	Swiss-Prot#: Q9H2S6NCBI Gene ID: 64102
Uniprot	Q9H2S6
GeneID	64102;
Calculated MW	37kd
Concentration	1.1mg/ml
Formulation	Rabbit IgG in pH7.4 PBS, 0.05% NaN <sub>3</sub> , 40% Glycerol.
Storage	Store at -20°C

## Application Details

Western blotting: 1:200-1000

Immunohistochemistry: 1: 30-150

## Images



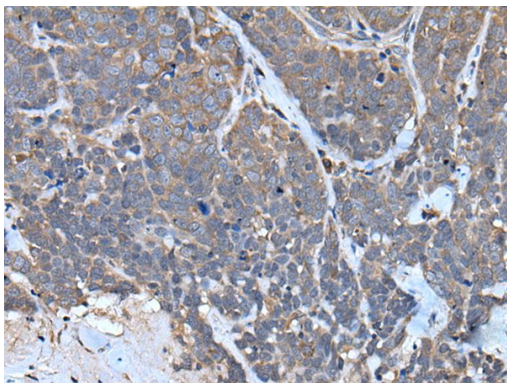
Gel: 8%SDS-PAGE

Lysate: 40 µg, Lane: Human fetal liver tissue lysate,

Primary antibody:TNMD antibody at dilution 1/400,

Secondary antibody: Goat anti rabbit IgG at 1/8000 dilution,

Exposure time: 20 seconds



The image on the left is immunohistochemistry of paraffin-embedded Human thyroid cancer tissue using TNMD Antibody at dilution 1/40, on the right is treated with synthetic peptide. (Original magnification: x200)

## Background

This gene encodes a protein that is related to chondromodulin-I, which is a cartilage-specific glycoprotein that functions to stimulate chondrocyte growth and to inhibit tube formation of endothelial cells. This protein is also an angiogenesis inhibitor. Genetic variation in this gene is associated with a risk for type 2 diabetes, central obesity and serum levels of systemic immune mediators in a body size-dependent manner. This gene is also a candidate gene for age-related macular degeneration, though a direct link has yet to be demonstrated.

Note: This product is for in vitro research use only