

DRD2 Antibody

Catalog No: #43657

Orders: order@signalwayantibody.comSupport: tech@signalwayantibody.com

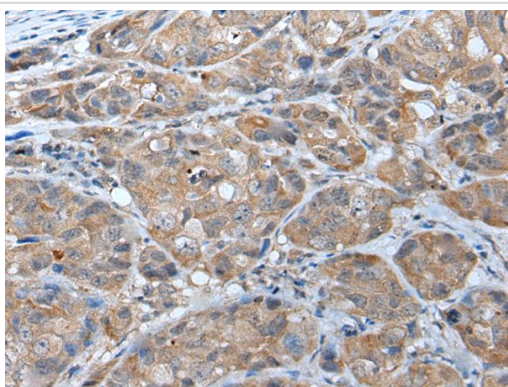
Description

Product Name	DRD2 Antibody
Host Species	Rabbit
Clonality	Polyclonal
Purification	Antigen affinity purification
Applications	IHC
Species Reactivity	Hu
Specificity	The antibody detects endogenous levels of total DRD2 protein.
Immunogen Type	peptide
Immunogen Description	Synthetic peptide of human DRD2
Target Name	DRD2
Other Names	D2R; D2DR
Accession No.	Swiss-Prot#: P14416NCBI Gene ID: 1813
Uniprot	P14416
GeneID	1813;
Concentration	0.7mg/ml
Formulation	Rabbit IgG in pH7.4 PBS, 0.05% NaN ₃ , 40% Glycerol.
Storage	Store at -20°C

Application Details

Immunohistochemistry: 1: 20-100

Images



The image on the left is immunohistochemistry of paraffin-embedded Human breast cancer tissue using DRD2 Antibody at dilution 1/30, on the right is treated with synthetic peptide. (Original magnification: x200)

Background

This gene encodes the D2 subtype of the dopamine receptor. This G-protein coupled receptor inhibits adenylyl cyclase activity. A missense mutation in this gene causes myoclonus dystonia; other mutations have been associated with schizophrenia. Alternative splicing of this gene results in two transcript variants encoding different isoforms. A third variant has been described, but it has not been determined whether this form is normal or due to aberrant splicing.?

Note: This product is for in vitro research use only