

## GAL Antibody

Catalog No: #43673

Orders: [order@signalwayantibody.com](mailto:order@signalwayantibody.com)Support: [tech@signalwayantibody.com](mailto:tech@signalwayantibody.com)

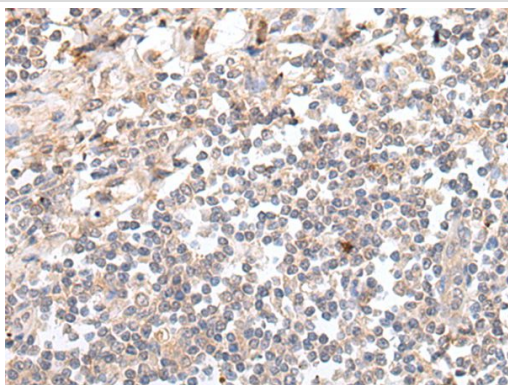
## Description

Product Name	GAL Antibody
Host Species	Rabbit
Clonality	Polyclonal
Purification	Antigen affinity purification
Applications	IHC
Species Reactivity	Hu
Specificity	The antibody detects endogenous levels of total GAL protein.
Immunogen Type	peptide
Immunogen Description	Synthetic peptide of human GAL
Target Name	GAL
Other Names	GALN; GLNN; GMAP; GAL-GMAP
Accession No.	Swiss-Prot#: P22466NCBI Gene ID: 51083
Uniprot	P22466
GeneID	51083;
Concentration	0.6mg/ml
Formulation	Rabbit IgG in pH7.4 PBS, 0.05% NaN <sub>3</sub> , 40% Glycerol.
Storage	Store at -20°C

## Application Details

Immunohistochemistry: 1: 20-100

## Images



The image on the left is immunohistochemistry of paraffin-embedded Human tonsil tissue using GAL Antibody at dilution 1/20, on the right is treated with synthetic peptide. (Original magnification: x200)

## Background

This gene encodes a neuroendocrine peptide that is widely expressed in the central and peripheral nervous systems and also the gastrointestinal tract, pancreas, adrenal gland and urogenital tract. The encoded protein is a precursor that is proteolytically processed to generate two mature peptides: galanin and galanin message-associated peptide (GMAP). Galanin has diverse physiological functions including nociception, feeding and energy homeostasis, osmotic regulation and water balance. GMAP has been demonstrated to possess antifungal activity and hypothesized to be part

of the innate immune system.

---

Note: This product is for in vitro research use only