

GNLY Antibody

Catalog No: #43674

Orders: order@signalwayantibody.comSupport: tech@signalwayantibody.com

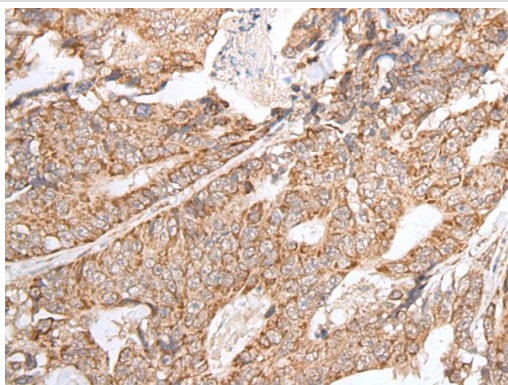
Description

Product Name	GNLY Antibody
Host Species	Rabbit
Clonality	Polyclonal
Purification	Antigen affinity purification
Applications	IHC
Species Reactivity	Hu
Specificity	The antibody detects endogenous levels of total GNLY protein.
Immunogen Type	peptide
Immunogen Description	Synthetic peptide of human GNLY
Target Name	GNLY
Other Names	LAG2; NKG5; LAG-2; D2S69E; TLA519
Accession No.	Swiss-Prot#: P22749NCBI Gene ID: 10578
Uniprot	P22749
GeneID	10578;
Concentration	0.5mg/ml
Formulation	Rabbit IgG in pH7.4 PBS, 0.05% NaN ₃ , 40% Glycerol.
Storage	Store at -20°C

Application Details

Immunohistochemistry: 1: 20-100

Images



The image on the left is immunohistochemistry of paraffin-embedded Human colorectal cancer tissue using GNLY Antibody at dilution 1/20, on the right is treated with synthetic peptide. (Original magnification: x200)

Background

The product of this gene is a member of the saposin-like protein (SAPLIP) family and is located in the cytotoxic granules of T cells, which are released upon antigen stimulation. This protein is present in cytotoxic granules of cytotoxic T lymphocytes and natural killer cells, and it has antimicrobial activity against *M. tuberculosis* and other organisms. Alternatively spliced transcript variants encoding different isoforms have been identified.

Note: This product is for in vitro research use only