

GPC5 Antibody

Catalog No: #43675

Orders: order@signalwayantibody.comSupport: tech@signalwayantibody.com

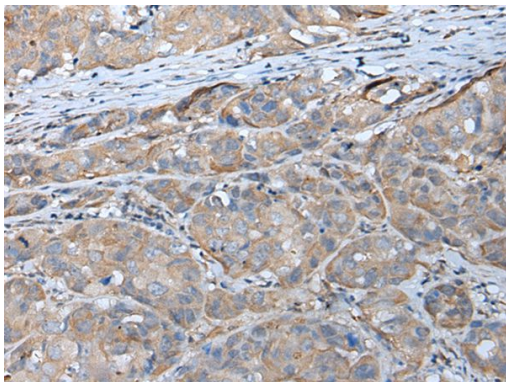
Description

Product Name	GPC5 Antibody
Host Species	Rabbit
Clonality	Polyclonal
Purification	Antigen affinity purification
Applications	IHC
Species Reactivity	Hu
Specificity	The antibody detects endogenous levels of total GPC5 protein.
Immunogen Type	peptide
Immunogen Description	Synthetic peptide of human GPC5
Target Name	GPC5
Accession No.	Swiss-Prot#: P78333NCBI Gene ID: 2262
Uniprot	P78333
GeneID	2262;
Concentration	1.1mg/ml
Formulation	Rabbit IgG in pH7.4 PBS, 0.05% NaN ₃ , 40% Glycerol.
Storage	Store at -20°C

Application Details

Immunohistochemistry: 1: 30-150

Images



The image on the left is immunohistochemistry of paraffin-embedded Human breast cancer tissue using GPC5 Antibody at dilution 1/40, on the right is treated with synthetic peptide. (Original magnification: x200)

Background

Cell surface heparan sulfate proteoglycans are composed of a membrane-associated protein core substituted with a variable number of heparan sulfate chains. Members of the glypican-related integral membrane proteoglycan family (GRIPS) contain a core protein anchored to the cytoplasmic membrane via a glycosyl phosphatidylinositol linkage. These proteins may play a role in the control of cell division and growth regulation.

Note: This product is for in vitro research use only