

GSK3A Antibody

Catalog No: #43681

Orders: order@signalwayantibody.comSupport: tech@signalwayantibody.com

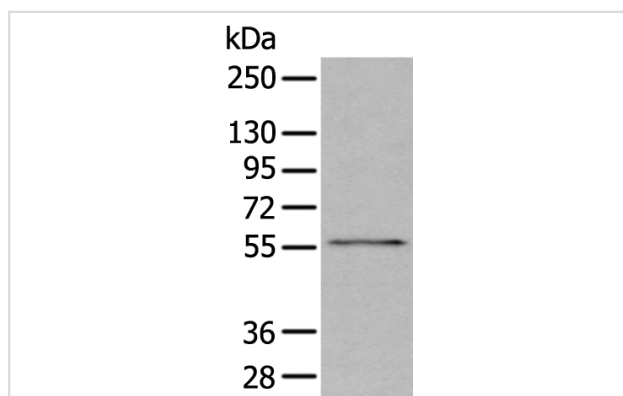
Description

Product Name	GSK3A Antibody
Host Species	Rabbit
Clonality	Polyclonal
Purification	Antigen affinity purification
Applications	WB
Species Reactivity	Hu Ms Rt
Specificity	The antibody detects endogenous levels of total GSK3A protein.
Immunogen Type	peptide
Immunogen Description	Synthetic peptide of human GSK3A
Target Name	GSK3A
Accession No.	Swiss-Prot#: P49840NCBI Gene ID: 2931
Uniprot	P49840
GeneID	2931;
Calculated MW	51kd
Concentration	0.3mg/ml
Formulation	Rabbit IgG in pH7.4 PBS, 0.05% NaN ₃ , 40% Glycerol.
Storage	Store at -20°C

Application Details

Western blotting: 1:200-1000

Images



Gel: 8%SDS-PAGE

Lysate: 40 µg, Lane: Mouse brain tissue lysate,

Primary antibody:GSK3A antibody at dilution 1/200 dilution,

Secondary antibody: Goat anti rabbit IgG at 1/8000 dilution,

Exposure time: 2 minutes

Background

This gene encodes a multifunctional Ser/Thr protein kinase that is implicated in the control of several regulatory proteins including glycogen synthase, and transcription factors, such as JUN. It also plays a role in the WNT and PI3K signaling pathways, as well as regulates the production of beta-amyloid peptides associated with Alzheimer's disease.

Note: This product is for in vitro research use only