

SERPINH1 Antibody

Catalog No: #43691

Orders: order@signalwayantibody.comSupport: tech@signalwayantibody.com

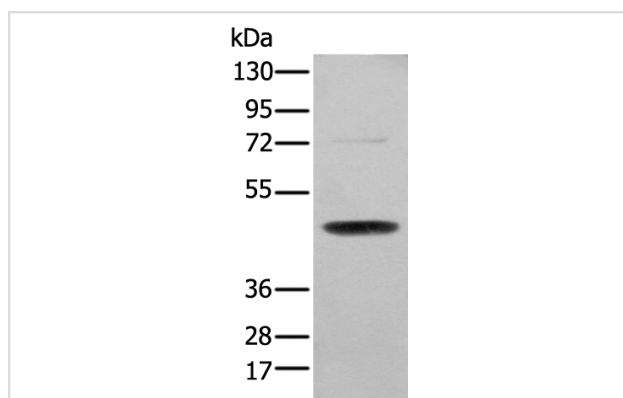
Description

Product Name	SERPINH1 Antibody
Host Species	Rabbit
Clonality	Polyclonal
Purification	Antigen affinity purification
Applications	WB
Species Reactivity	Hu Ms Rt
Specificity	The antibody detects endogenous levels of total SERPINH1 protein.
Immunogen Type	peptide
Immunogen Description	Synthetic peptide of human SERPINH1
Target Name	SERPINH1
Other Names	CBP1; CBP2; OI10; gp46; AsTP3; HSP47; PIG14; PPROM; RA-A47; SERPINH2
Accession No.	Swiss-Prot#: P50454NCBI Gene ID: 871
Uniprot	P50454
GeneID	871;
Calculated MW	46kd
Concentration	0.5mg/ml
Formulation	Rabbit IgG in pH7.4 PBS, 0.05% NaN ₃ , 40% Glycerol.
Storage	Store at -20°C

Application Details

Western blotting: 1:200-1000

Images



Gel: 8%SDS-PAGE

Lysate: 40 µg, Lane: NIH/3T3 cell,

Primary antibody:SERPINH1 antibody at dilution 1/200 dilution,

Secondary antibody: Goat anti rabbit IgG at 1/8000 dilution,

Exposure time: 5 seconds

Background

This gene encodes a member of the serpin superfamily of serine proteinase inhibitors. The encoded protein is localized to the endoplasmic reticulum and plays a role in collagen biosynthesis as a collagen-specific molecular chaperone. Autoantibodies to the encoded protein have been found in

patients with rheumatoid arthritis. Expression of this gene may be a marker for cancer, and nucleotide polymorphisms in this gene may be associated with preterm birth caused by preterm premature rupture of membranes.

Note: This product is for in vitro research use only