

## SLC16A6 Antibody

Catalog No: #43695

Orders: [order@signalwayantibody.com](mailto:order@signalwayantibody.com)Support: [tech@signalwayantibody.com](mailto:tech@signalwayantibody.com)

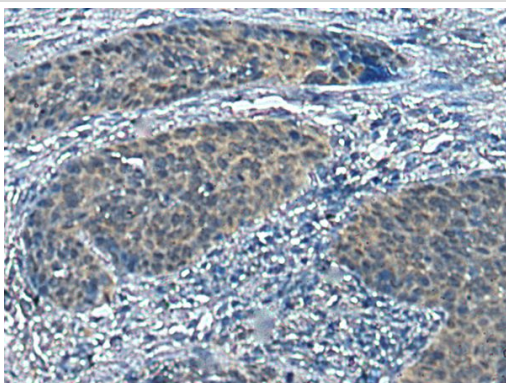
## Description

Product Name	SLC16A6 Antibody
Host Species	Rabbit
Clonality	Polyclonal
Purification	Antigen affinity purification
Applications	IHC
Species Reactivity	Hu
Specificity	The antibody detects endogenous levels of total SLC16A6 protein.
Immunogen Type	peptide
Immunogen Description	Synthetic peptide of human SLC16A6
Target Name	SLC16A6
Other Names	MCT6; MCT7
Accession No.	Swiss-Prot#: O15403NCBI Gene ID: 9120
Uniprot	O15403
GeneID	9120;
Concentration	0.2mg/ml
Formulation	Rabbit IgG in pH7.4 PBS, 0.05% NaN <sub>3</sub> , 40% Glycerol.
Storage	Store at -20°C

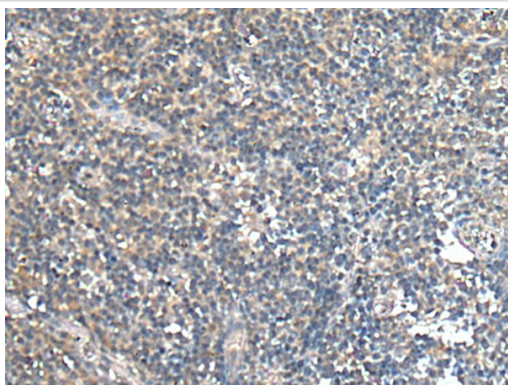
## Application Details

Immunohistochemistry: 1: 20-100

## Images



The image on the left is immunohistochemistry of paraffin-embedded Human cervical cancer tissue using SLC16A6 Antibody at dilution 1/20, on the right is treated with synthetic peptide. (Original magnification: x200)



The image on the left is immunohistochemistry of paraffin-embedded Human tonsil tissue using SLC16A6 Antibody at dilution 1/20, on the right is treated with synthetic peptide. (Original magnification: x200)

## Background

SLC16A6 is a proton-linked monocarboxylate transporter. It catalyzes the rapid transport across the plasma membrane of many monocarboxylates such as lactate, pyruvate, branched-chain oxo acids derived from leucine, valine and isoleucine, and the ketone bodies acetoacetate, beta-hydroxybutyrate and acetate.

Note: This product is for in vitro research use only