

PTPRG Antibody

Catalog No: #43700

Orders: order@signalwayantibody.comSupport: tech@signalwayantibody.com

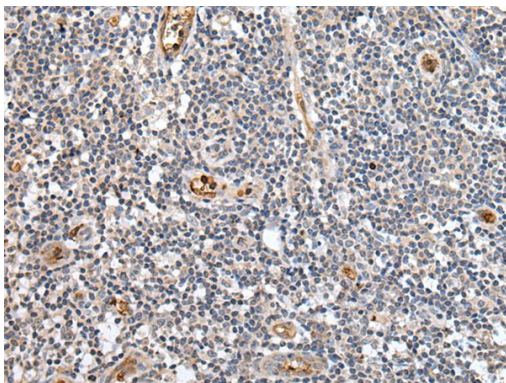
Description

Product Name	PTPRG Antibody
Host Species	Rabbit
Clonality	Polyclonal
Purification	Antigen affinity purification
Applications	IHC
Species Reactivity	Hu Ms
Specificity	The antibody detects endogenous levels of total PTPRG protein.
Immunogen Type	peptide
Immunogen Description	Synthetic peptide of human PTPRG
Target Name	PTPRG
Other Names	PTPG; HPTPG; RPTPG; R-PTP-GAMMA
Accession No.	Swiss-Prot#: P23470NCBI Gene ID: 5793
Uniprot	P23470
GeneID	5793;
Concentration	0.6mg/ml
Formulation	Rabbit IgG in pH7.4 PBS, 0.05% NaN ₃ , 40% Glycerol.
Storage	Store at -20°C

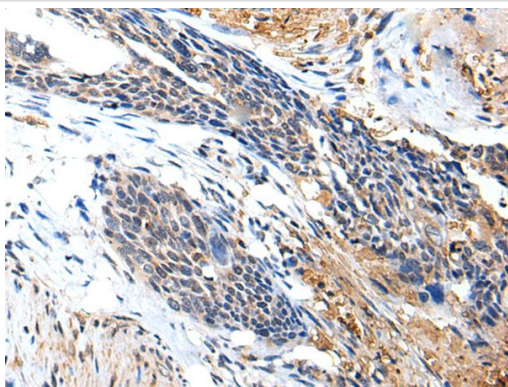
Application Details

Immunohistochemistry: 1: 20-100

Images



The image on the left is immunohistochemistry of paraffin-embedded Human tonsil tissue using PTPRG Antibody at dilution 1/20, on the right is treated with synthetic peptide. (Original magnification: x200)



The image on the left is immunohistochemistry of paraffin-embedded Human cervical cancer tissue using PTPRG Antibody at dilution 1/20, on the right is treated with synthetic peptide. (Original magnification: x200)

Background

The protein encoded by this gene is a member of the protein tyrosine phosphatase (PTP) family. PTPs are known to be signaling molecules that regulate a variety of cellular processes including cell growth, differentiation, mitotic cycle, and oncogenic transformation. This PTP possesses an extracellular region, a single transmembrane region, and two tandem intracytoplasmic catalytic domains, and thus represents a receptor-type PTP. The extracellular region of this PTP contains a carbonic anhydrase-like (CAH) domain, which is also found in the extracellular region of PTPRBETA/ZETA. This gene is located in a chromosomal region that is frequently deleted in renal cell carcinoma and lung carcinoma, thus is thought to be a candidate tumor suppressor gene.

Note: This product is for in vitro research use only