

## HOXB9 Antibody

Catalog No: #43713

Orders: [order@signalwayantibody.com](mailto:order@signalwayantibody.com)Support: [tech@signalwayantibody.com](mailto:tech@signalwayantibody.com)

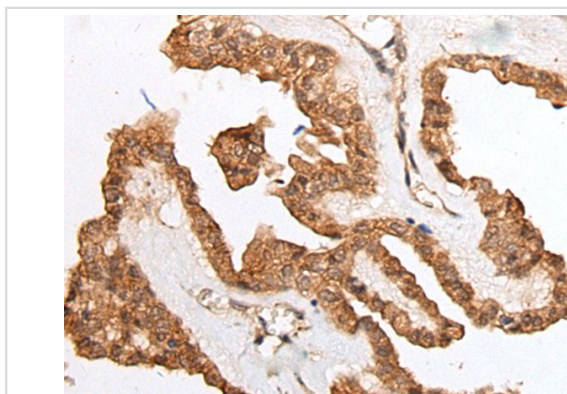
## Description

|                       |   |
|-----------------------|---|
| Product Name          | HOXB9 Antibody  |
| Host Species          | Rabbit  |
| Clonality             | Polyclonal  |
| Purification          | Antigen affinity purification                                   |
| Applications          | IHC   |
| Species Reactivity    | Hu Ms   |
| Specificity           | The antibody detects endogenous levels of total HOXB9 protein.  |
| Immunogen Type        | peptide   |
| Immunogen Description | Synthetic peptide of human HOXB9                                |
| Target Name           | HOXB9   |
| Other Names           | HOX2; HOX2E; HOX-2.5  |
| Accession No.         | Swiss-Prot#: P17482NCBI Gene ID: 3219                           |
| Uniprot               | P17482  |
| GeneID                | 3219;   |
| Concentration         | 1.6mg/ml  |
| Formulation           | Rabbit IgG in pH7.4 PBS, 0.05% NaN <sub>3</sub> , 40% Glycerol. |
| Storage               | Store at -20°C  |

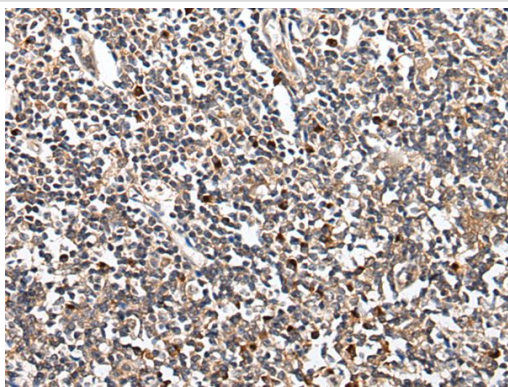
## Application Details

Immunohistochemistry: 1: 30-150

## Images



The image on the left is immunohistochemistry of paraffin-embedded Human thyroid cancer tissue using HOXB9 Antibody at dilution 1/45, on the right is treated with synthetic peptide. (Original magnification: x200)



The image on the left is immunohistochemistry of paraffin-embedded Human tonsil tissue using HOXB9 Antibody at dilution 1/45, on the right is treated with synthetic peptide. (Original magnification: x200)

## Background

This gene is a member of the Abd-B homeobox family and encodes a protein with a homeobox DNA-binding domain. It is included in a cluster of homeobox B genes located on chromosome 17. The encoded nuclear protein functions as a sequence-specific transcription factor that is involved in cell proliferation and differentiation. Increased expression of this gene is associated with some cases of leukemia, prostate cancer and lung cancer.?

Note: This product is for in vitro research use only