

CXCL5 Antibody

Catalog No: #43728

Orders: order@signalwayantibody.comSupport: tech@signalwayantibody.com

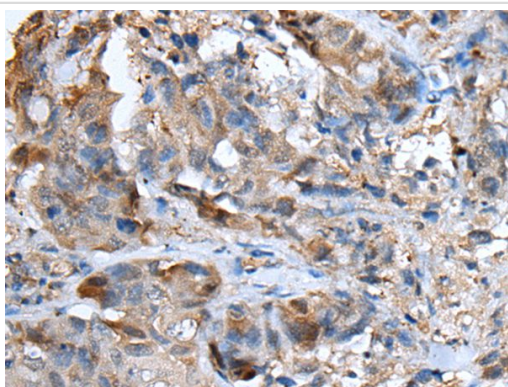
Description

Product Name	CXCL5 Antibody
Host Species	Rabbit
Clonality	Polyclonal
Purification	Antigen affinity purification
Applications	IHC
Species Reactivity	Hu
Specificity	The antibody detects endogenous levels of total CXCL5 protein.
Immunogen Type	peptide
Immunogen Description	Synthetic peptide of human CXCL5
Target Name	CXCL5
Other Names	SCYB5; ENA-78
Accession No.	Swiss-Prot#: P42830NCBI Gene ID: 6374
Uniprot	P42830
GeneID	6374;
Concentration	1.4mg/ml
Formulation	Rabbit IgG in pH7.4 PBS, 0.05% NaN ₃ , 40% Glycerol.
Storage	Store at -20°C

Application Details

Immunohistochemistry: 1: 100-250

Images



The image on the left is immunohistochemistry of paraffin-embedded Human breast cancer tissue using CXCL5 Antibody at dilution 1/100, on the right is treated with synthetic peptide. (Original magnification: x200)

Background

This gene encodes a protein that is a member of the CXC subfamily of chemokines. Chemokines, which recruit and activate leukocytes, are classified by function (inflammatory or homeostatic) or by structure. This protein is proposed to bind the G-protein coupled receptor chemokine (C-X-C motif) receptor 2 to recruit neutrophils, to promote angiogenesis and to remodel connective tissues. This protein is thought to play a role in cancer cell proliferation, migration, and invasion.?

Note: This product is for in vitro research use only