

PLAG1 Antibody

Catalog No: #43767



Orders: [order@signalwayantibody.com](mailto:order@signalwayantibody.com)  
Support: [tech@signalwayantibody.com](mailto:tech@signalwayantibody.com)

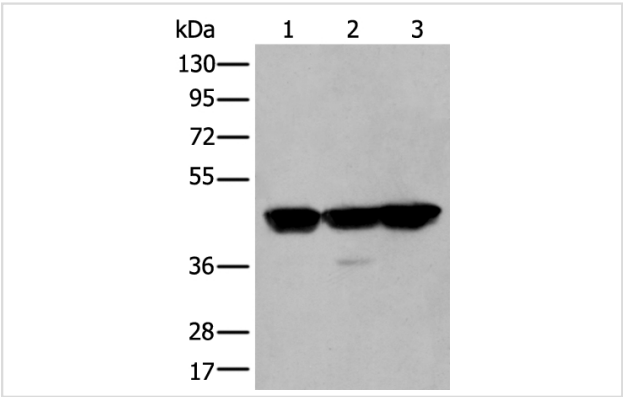
Description

Product Name	PLAG1 Antibody
Host Species	Rabbit
Clonality	Polyclonal
Purification	Antigen affinity purification
Applications	IHC WB
Species Reactivity	Hu
Specificity	The antibody detects endogenous levels of total PLAG1 protein.
Immunogen Type	peptide
Immunogen Description	Synthetic peptide of human PLAG1
Target Name	PLAG1
Other Names	PSA; SGPA; ZNF912
Accession No.	Swiss-Prot#: Q6DJT9NCBI Gene ID: 5324
Uniprot	Q6DJT9
GeneID	5324;
Calculated MW	56kd
Concentration	0.5mg/ml
Formulation	Rabbit IgG in pH7.4 PBS, 0.05% NaN3, 40% Glycerol.
Storage	Store at -20°C

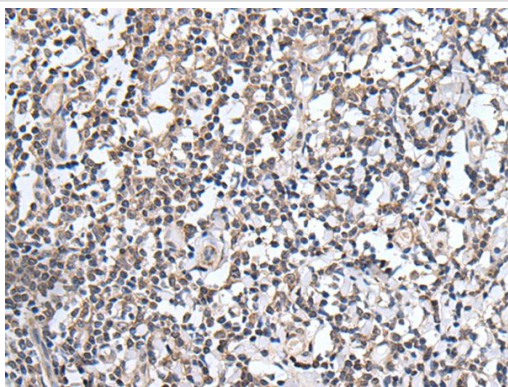
Application Details

Western blotting: 1:200-1000
Immunohistochemistry: 1: 20-100

Images



Gel: 8%SDS-PAGE  
Lysate: 40 µg, Lane 1-3: HeLaB£B¬A431 and Hepg2 cell lysates,  
Primary antibody:PLAG1 antibody at dilution 1/200 dilution,  
Secondary antibody: Goat anti rabbit IgG at 1/8000 dilution,  
Exposure time: 2 seconds



The image on the left is immunohistochemistry of paraffin-embedded Human tonsil tissue using PLAG1 Antibody at dilution 1/25, on the right is treated with synthetic peptide. (Original magnification: x200)

## Background

Pleomorphic adenoma gene 1 encodes a zinc finger protein with 2 putative nuclear localization signals. PLAG1, which is developmentally regulated, has been shown to be consistently rearranged in pleomorphic adenomas of the salivary glands. PLAG1 is activated by the reciprocal chromosomal translocations involving 8q12 in a subset of salivary gland pleomorphic adenomas. Three transcript variants encoding two different isoforms have been found for this gene.

Note: This product is for in vitro research use only