

KLK12 Antibody

Catalog No: #43777

Orders: order@signalwayantibody.comSupport: tech@signalwayantibody.com

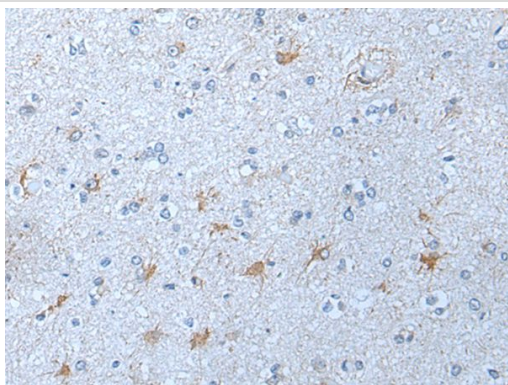
Description

| | |
|-----------------------|---|
| Product Name | KLK12 Antibody |
| Host Species | Rabbit |
| Clonality | Polyclonal |
| Purification | Antigen affinity purification |
| Applications | IHC |
| Species Reactivity | Hu |
| Specificity | The antibody detects endogenous levels of total KLK12 protein. |
| Immunogen Type | peptide |
| Immunogen Description | Synthetic peptide of human KLK12 |
| Target Name | KLK12 |
| Other Names | KLKL5; KLK-L5 |
| Accession No. | Swiss-Prot#: Q9UKR0NCBI Gene ID: 43849 |
| Uniprot | Q9UKR0 |
| GeneID | 43849; |
| Concentration | 0.8mg/ml |
| Formulation | Rabbit IgG in pH7.4 PBS, 0.05% NaN ₃ , 40% Glycerol. |
| Storage | Store at -20°C |

Application Details

Immunohistochemistry: 1: 10-50

Images



The image on the left is immunohistochemistry of paraffin-embedded Human brain tissue using KLK12 Antibody at dilution 1/30, on the right is treated with synthetic peptide. (Original magnification: x200)

Background

Kallikreins are a subgroup of serine proteases having diverse physiological functions. Growing evidence suggests that many kallikreins are implicated in carcinogenesis and some have potential as novel cancer and other disease biomarkers. This gene is one of the fifteen kallikrein subfamily members located in a cluster on chromosome 19. Alternate splicing of this gene results in three transcript variants encoding different isoforms.?

Note: This product is for in vitro research use only