

PAPPA-AS1 Antibody

Catalog No: #43780

Orders: order@signalwayantibody.comSupport: tech@signalwayantibody.com

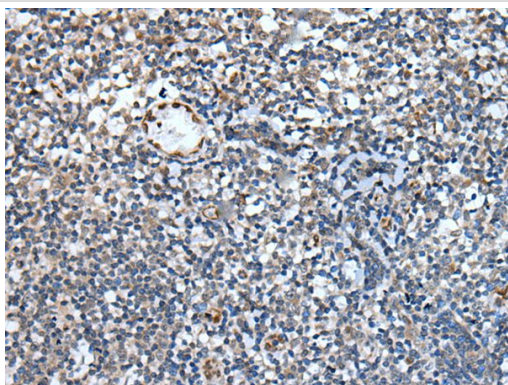
Description

Product Name	PAPPA-AS1 Antibody
Host Species	Rabbit
Clonality	Polyclonal
Purification	Antigen affinity purification
Applications	IHC
Species Reactivity	Hu
Specificity	The antibody detects endogenous levels of total PAPPA-AS1 protein.
Immunogen Type	peptide
Immunogen Description	Synthetic peptide of human PAPPA-AS1
Target Name	PAPPA-AS1
Other Names	DIPAS; TAF4B; PAPPAS; TAF2C2; PAPPAAS; PAPPA-AS; TAFII105; NCRNA00156
Accession No.	Swiss-Prot#: Q5QFB9NCBI Gene ID: 493913
Uniprot	Q5QFB9
GeneID	493913;
Concentration	0.8mg/ml
Formulation	Rabbit IgG in pH7.4 PBS, 0.05% NaN ₃ , 40% Glycerol.
Storage	Store at -20°C

Application Details

Immunohistochemistry: 1: 20-100

Images



The image on the left is immunohistochemistry of paraffin-embedded Human tonsil tissue using PAPPA-AS1 Antibody at dilution 1/35, on the right is treated with synthetic peptide. (Original magnification: x200)

Background

PAPP A was originally isolated from pregnancy serum as heterotetrameric protein complex with molecular weight approximately 500 kDa, consisting of two PAPP A subunits disulfide-linked with two subunits of the proform of eosinophil major basic protein (proMBP). In such a complex proMBP functions as an inhibitor of PAPP A proteinase activity. PAPP A is widely used as a marker of some pathologies during pregnancy. Reduced level of PAPP A in pregnancy blood in the first trimester is associated with fetal Down syndrome. PAPP A is considered as one of the best biochemical

markers in early pregnancy used to screen for Down syndrome during the first trimester (Wald, N. J. et al).

Note: This product is for in vitro research use only