

MYL12B Antibody

Catalog No: #43795

Orders: order@signalwayantibody.comSupport: tech@signalwayantibody.com

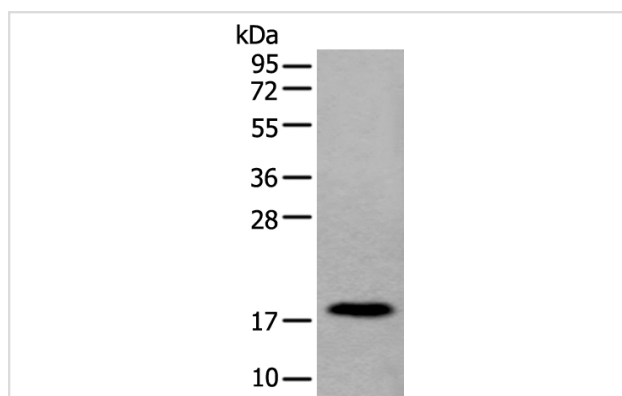
Description

Product Name	MYL12B Antibody
Host Species	Rabbit
Clonality	Polyclonal
Purification	Antigen affinity purification
Applications	WB
Species Reactivity	Hu Ms Rt
Specificity	The antibody detects endogenous levels of total MYL12B protein.
Immunogen Type	peptide
Immunogen Description	Synthetic peptide of human MYL12B
Target Name	MYL12B
Other Names	MLC-B; MRLC2
Accession No.	Swiss-Prot#: O14950NCBI Gene ID: 103910
Uniprot	O14950
GeneID	103910;10627;
Calculated MW	20kd
Concentration	0.6mg/ml
Formulation	Rabbit IgG in pH7.4 PBS, 0.05% NaN ₃ , 40% Glycerol.
Storage	Store at -20°C

Application Details

Western blotting: 1:200-1000

Images



Gel: 12%SDS-PAGE

Lysate: 40 µg, Lane: Human urinary bladder tissue lysate,

Primary antibody:MYL12B antibody at dilution 1/250,

Secondary antibody: Goat anti rabbit IgG at 1/8000 dilution,

Exposure time: 20 seconds

Background

MYL12B is a regulatory subunit of myosin and plays an important role in regulation of both smooth muscle and nonmuscle cell contractile activity via its phosphorylation. There are two groups of residues on the MYL12B that are phosphorylated by distinct kinases and have contrasting effects on

myosin II biophysical properties. Phosphorylation at Thr18/Ser19 essentially B° activates B^{\pm} the myosin molecule to produce force. The second group of phosphorylated residues is at the N-terminus of the MYL12B at Ser1, Ser2 and Thr9 and causes inhibitory effect on myosin activity.

Note: This product is for in vitro research use only