

PYM1 Antibody

Catalog No: #43811

Orders: order@signalwayantibody.comSupport: tech@signalwayantibody.com

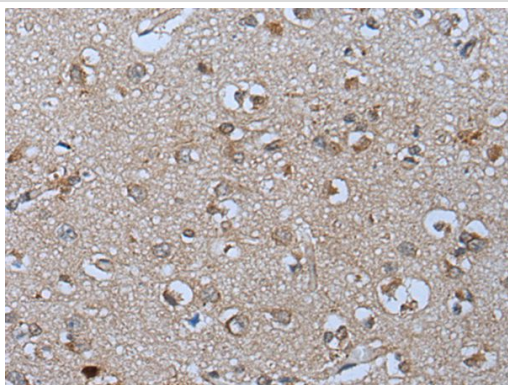
Description

Product Name	PYM1 Antibody
Host Species	Rabbit
Clonality	Polyclonal
Purification	Antigen affinity purification
Applications	IHC
Species Reactivity	Hu Ms
Specificity	The antibody detects endogenous levels of total PYM1 protein.
Immunogen Type	peptide
Immunogen Description	Synthetic peptide of human PYM1
Target Name	PYM1
Other Names	PYM; WIBG
Accession No.	Swiss-Prot#: Q9BRP8NCBI Gene ID: 84305
Uniprot	Q9BRP8
GeneID	84305;
Concentration	0.6mg/ml
Formulation	Rabbit IgG in pH7.4 PBS, 0.05% NaN ₃ , 40% Glycerol.
Storage	Store at -20°C

Application Details

Immunohistochemistry: 1: 10-50

Images



The image on the left is immunohistochemistry of paraffin-embedded Human brain tissue using PYM1 Antibody at dilution 1/25, on the right is treated with synthetic peptide. (Original magnification: x200)

Background

Key regulator of the exon junction complex (EJC), a multiprotein complex that associates immediately upstream of the exon-exon junction on mRNAs and serves as a positional landmark for the intron exon structure of genes and directs post-transcriptional processes in the cytoplasm such as mRNA export, nonsense-mediated mRNA decay (NMD) or translation. Acts as a EJC disassembly factor, allowing translation-dependent EJC removal and recycling by disrupting mature EJC from spliced mRNAs. Its association with the 40S ribosomal subunit probably prevents a translation-independent

disassembly of the EJC from spliced mRNAs, by restricting its activity to mRNAs that have been translated. Interferes with NMD and enhances translation of spliced mRNAs, probably by antagonizing EJC functions. May bind RNA; the relevance of RNA-binding remains unclear in vivo, RNA-binding was detected by PubMed:14968132, while PubMed:19410547?did not detect RNA-binding activity independently of the EJC.

Note: This product is for in vitro research use only