

## ENKUR Antibody

Catalog No: #43859

Orders: [order@signalwayantibody.com](mailto:order@signalwayantibody.com)Support: [tech@signalwayantibody.com](mailto:tech@signalwayantibody.com)

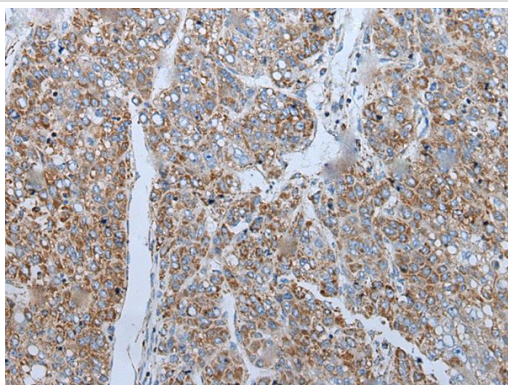
## Description

Product Name	ENKUR Antibody
Host Species	Rabbit
Clonality	Polyclonal
Purification	Antigen affinity purification
Applications	IHC
Species Reactivity	Hu
Specificity	The antibody detects endogenous levels of total ENKUR protein.
Immunogen Type	peptide
Immunogen Description	Synthetic peptide of human ENKUR
Target Name	ENKUR
Other Names	CFAP106; C10orf63
Accession No.	Swiss-Prot#: Q8TC29NCBI Gene ID: 219670
Uniprot	Q8TC29
GeneID	219670;
Concentration	1mg/ml
Formulation	Rabbit IgG in pH7.4 PBS, 0.05% NaN <sub>3</sub> , 40% Glycerol.
Storage	Store at -20°C

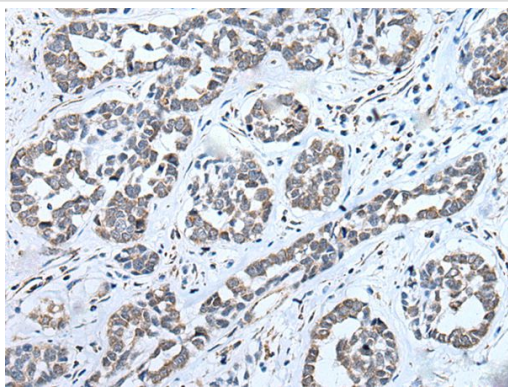
## Application Details

Immunohistochemistry: 1: 20-100

## Images



The image on the left is immunohistochemistry of paraffin-embedded Human liver cancer tissue using ENKUR Antibody at dilution 1/40, on the right is treated with synthetic peptide. (Original magnification: x200)



The image on the left is immunohistochemistry of paraffin-embedded Human esophagus cancer tissue using ENKUR Antibody at dilution 1/40, on the right is treated with synthetic peptide. (Original magnification: x200)

## Background

This gene encodes a protein that interacts with calmodulin and several transient receptor potential canonical cation channel proteins. The encoded protein may function as an adaptor to localize signal transduction machinery to calcium channels. Alternative splicing results in multiple transcript variants.

Note: This product is for in vitro research use only