

## AKIP1 Antibody

Catalog No: #43863

Orders: [order@signalwayantibody.com](mailto:order@signalwayantibody.com)Support: [tech@signalwayantibody.com](mailto:tech@signalwayantibody.com)

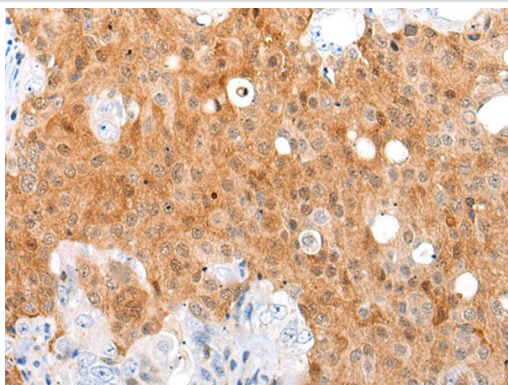
## Description

Product Name	AKIP1 Antibody
Host Species	Rabbit
Clonality	Polyclonal
Purification	Antigen affinity purification
Applications	IHC
Species Reactivity	Hu
Specificity	The antibody detects endogenous levels of total AKIP1 protein.
Immunogen Type	peptide
Immunogen Description	Synthetic peptide of human AKIP1
Target Name	AKIP1
Other Names	BCA3; C11orf17
Accession No.	Swiss-Prot#: Q9NQ31NCBI Gene ID: 56672
Uniprot	Q9NQ31
GeneID	56672;
Concentration	0.7mg/ml
Formulation	Rabbit IgG in pH7.4 PBS, 0.05% NaN <sub>3</sub> , 40% Glycerol.
Storage	Store at -20°C

## Application Details

Immunohistochemistry: 1: 20-100

## Images



The image on the left is immunohistochemistry of paraffin-embedded Human ovarian cancer tissue using AKIP1 Antibody at dilution 1/30, on the right is treated with synthetic peptide. (Original magnification: x200)

## Background

This gene encodes a nuclear protein that interacts with protein kinase A catalytic subunit, and regulates the effect of the cAMP-dependent protein kinase signaling pathway on the NF-kappa-B activation cascade. Alternatively spliced transcript variants have been described for this gene.

---

Note: This product is for in vitro research use only