

## CISH Antibody

Catalog No: #43887

Orders: [order@signalwayantibody.com](mailto:order@signalwayantibody.com)Support: [tech@signalwayantibody.com](mailto:tech@signalwayantibody.com)

## Description

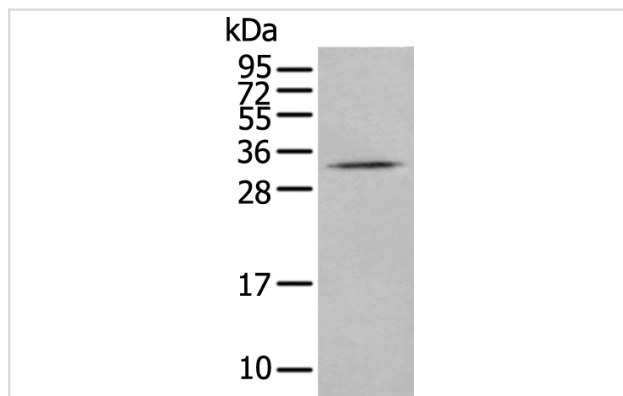
Product Name	CISH Antibody
Host Species	Rabbit
Clonality	Polyclonal
Purification	Antigen affinity purification
Applications	IHC WB
Species Reactivity	Hu
Specificity	The antibody detects endogenous levels of total CISH protein.
Immunogen Type	protein
Immunogen Description	Fusion protein of human CISH
Target Name	CISH
Other Names	CIS; G18; SOCS; CIS-1; BACTS2
Accession No.	Swiss-Prot#: Q9NSE2NCBI Gene ID: 1154
Uniprot	Q9NSE2
GeneID	1154;
Calculated MW	29kd
Concentration	0.4mg/ml
Formulation	Rabbit IgG in pH7.4 PBS, 0.05% NaN <sub>3</sub> , 40% Glycerol.
Storage	Store at -20°C

## Application Details

Western blotting: 1:200-1000

Immunohistochemistry: 1: 20-100

## Images



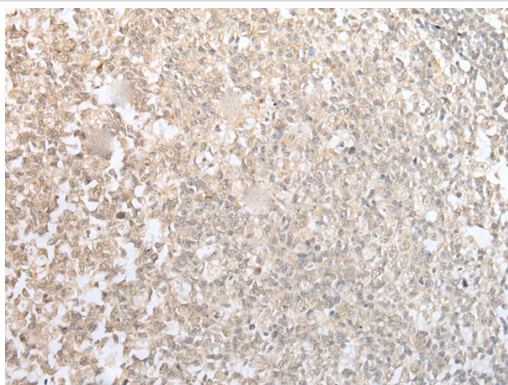
Gel: 12%SDS-PAGE

Lysate: 40 µg, Lane: Human kidney tissue lysate,

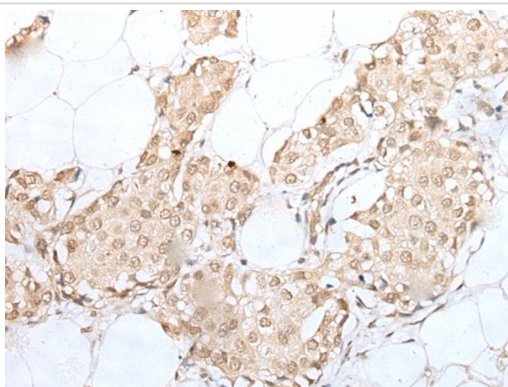
Primary antibody:CISH antibody at dilution 1/200,

Secondary antibody: Goat anti rabbit IgG at 1/8000 dilution,

Exposure time: 2 minutes



The image on the left is immunohistochemistry of paraffin-embedded Human tonsil tissue using CISH Antibody at dilution 1/30, on the right is treated with fusion protein. (Original magnification: x200)



The image on the left is immunohistochemistry of paraffin-embedded Human breast cancer tissue using CISH Antibody at dilution 1/30, on the right is treated with fusion protein. (Original magnification: x200)

## Background

The protein encoded by this gene contains a SH2 domain and a SOCS box domain. The protein thus belongs to the cytokine-induced STAT inhibitor (CIS), also known as suppressor of cytokine signaling (SOCS) or STAT-induced STAT inhibitor (SSI), protein family. CIS family members are known to be cytokine-inducible negative regulators of cytokine signaling. The expression of this gene can be induced by IL2, IL3, GM-CSF and EPO in hematopoietic cells. Proteasome-mediated degradation of this protein has been shown to be involved in the inactivation of the erythropoietin receptor. Multiple transcript variants encoding different isoforms have been found for this gene.

Note: This product is for in vitro research use only