

## SLCO2B1 Antibody

Catalog No: #43910

Orders: [order@signalwayantibody.com](mailto:order@signalwayantibody.com)Support: [tech@signalwayantibody.com](mailto:tech@signalwayantibody.com)

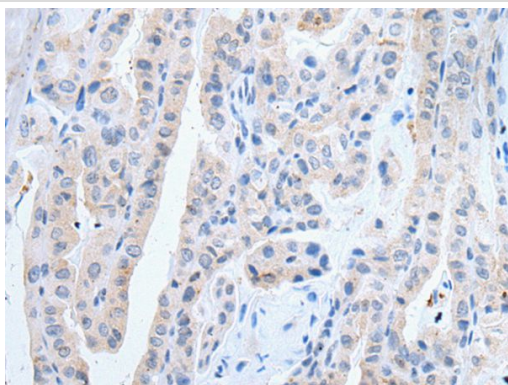
## Description

Product Name	SLCO2B1 Antibody
Host Species	Rabbit
Clonality	Polyclonal
Purification	Antigen affinity purification
Applications	IHC
Species Reactivity	Hu
Specificity	The antibody detects endogenous levels of total SLCO2B1 protein.
Immunogen Type	peptide
Immunogen Description	Synthetic peptide of human SLCO2B1
Target Name	SLCO2B1
Other Names	OATPB; OATP-B; OATP2B1; SLC21A9
Accession No.	Swiss-Prot#: O94956NCBI Gene ID: 11309
Uniprot	O94956
GeneID	11309;
Concentration	0.8mg/ml
Formulation	Rabbit IgG in pH7.4 PBS, 0.05% NaN <sub>3</sub> , 40% Glycerol.
Storage	Store at -20°C

## Application Details

Immunohistochemistry: 1: 20-100

## Images



The image on the left is immunohistochemistry of paraffin-embedded Human thyroid cancer tissue using SLCO2B1 Antibody at dilution 1/30, on the right is treated with synthetic peptide. (Original magnification: x200)

## Background

This locus encodes a member of the organic anion-transporting polypeptide family of membrane proteins. The protein encoded by this locus may function in regulation of placental uptake of sulfated steroids. Alternatively spliced transcript variants have been described.

---

Note: This product is for in vitro research use only