

KRTAP11-1 Antibody

Catalog No: #43919

Orders: order@signalwayantibody.comSupport: tech@signalwayantibody.com

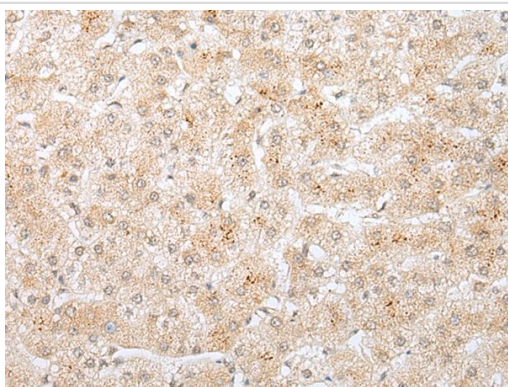
Description

Product Name	KRTAP11-1 Antibody
Host Species	Rabbit
Clonality	Polyclonal
Purification	Antigen affinity purification
Applications	IHC
Species Reactivity	Hu
Specificity	The antibody detects endogenous levels of total KRTAP11-1 protein.
Immunogen Type	peptide
Immunogen Description	Synthetic peptide of human KRTAP11-1
Target Name	KRTAP11-1
Other Names	HACL1; HACL-1; KAP11.1
Accession No.	Swiss-Prot#: Q8IUC1NCBI Gene ID: 337880
Uniprot	Q8IUC1
GeneID	337880;
Concentration	0.8mg/ml
Formulation	Rabbit IgG in pH7.4 PBS, 0.05% NaN ₃ , 40% Glycerol.
Storage	Store at -20°C

Application Details

Immunohistochemistry: 1: 20-100

Images



The image on the left is immunohistochemistry of paraffin-embedded Human liver cancer tissue using KRTAP11-1 Antibody at dilution 1/20, on the right is treated with synthetic peptide. (Original magnification: x200)

Background

In the hair cortex, hair keratin intermediate filaments are embedded in an interfilamentous matrix, consisting of hair keratin-associated proteins (KRTAP), which are essential for the formation of a rigid and resistant hair shaft through their extensive disulfide bond cross-linking with abundant cysteine residues of hair keratins. The matrix proteins include the high-sulfur and high-glycine-tyrosine keratins.

Note: This product is for in vitro research use only