

DOK6 Antibody

Catalog No: #43921

Orders: order@signalwayantibody.comSupport: tech@signalwayantibody.com

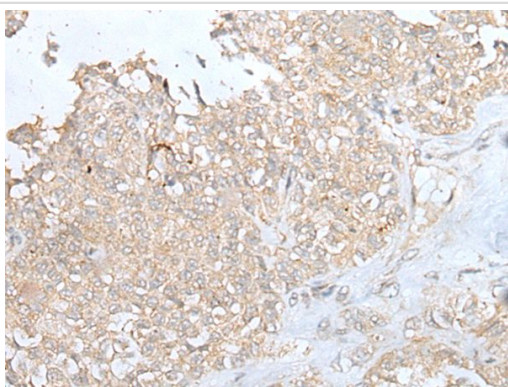
Description

Product Name	DOK6 Antibody
Host Species	Rabbit
Clonality	Polyclonal
Purification	Antigen affinity purification
Applications	IHC
Species Reactivity	Hu Ms
Specificity	The antibody detects endogenous levels of total DOK6 protein.
Immunogen Type	peptide
Immunogen Description	Synthetic peptide of human DOK6
Target Name	DOK6
Other Names	DOK5L; HsT3226
Accession No.	Swiss-Prot#: Q6PKX4NCBI Gene ID: 220164
Uniprot	Q6PKX4
GeneID	220164;
Concentration	0.5mg/ml
Formulation	Rabbit IgG in pH7.4 PBS, 0.05% NaN ₃ , 40% Glycerol.
Storage	Store at -20°C

Application Details

Immunohistochemistry: 1: 20-100

Images



The image on the left is immunohistochemistry of paraffin-embedded Human ovarian cancer tissue using DOK6 Antibody at dilution 1/20, on the right is treated with synthetic peptide. (Original magnification: x200)

Background

DOK6 is a member of the DOK (see DOK1; MIM 602919) family of intracellular adaptors that play a role in the RET (MIM 164761) signaling cascade (Crowder et al., 2004 [PubMed 15286081]).

Note: This product is for in vitro research use only