

HPSE2 Antibody

Catalog No: #43928

Orders: order@signalwayantibody.comSupport: tech@signalwayantibody.com

Description

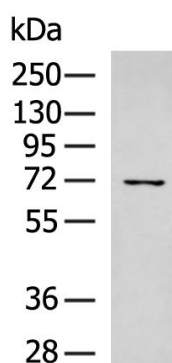
Product Name	HPSE2 Antibody
Host Species	Rabbit
Clonality	Polyclonal
Purification	Antigen affinity purification
Applications	IHC WB
Species Reactivity	Human; Mouse
Specificity	The antibody detects endogenous levels of total HPSE2 protein.
Immunogen Description	Synthetic peptide of human HPSE2
Target Name	HPSE2
Other Names	UFS; HPA2; HPR2; UFS1
Accession No.	Swiss-Prot#: Q8WWQ2NCBI Gene ID: 60495
Uniprot	Q8WWQ2
GeneID	60495;
Calculated MW	67kd
Concentration	0.7mg/ml
Formulation	Rabbit IgG in pH7.4 PBS, 0.05% NaN ₃ , 40% Glycerol.
Storage	Store at -20°C

Application Details

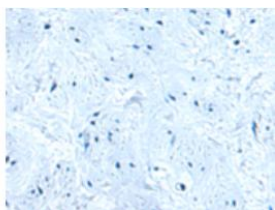
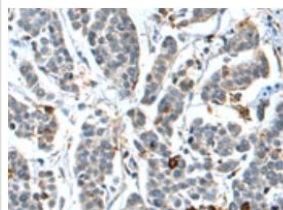
WB 1:200-1:1000;

IHC 1:50-1:100;

Images



Gel: 8%SDS-PAGE;
Lysate: 40 ug;
Lane: Mouse small intestines tissue lysate;
Primary antibody: at dilution 1/550;
Secondary antibody: at 1/5000 dilution;
Exposure time: 3 minutes



The image on the left is immunohistochemistry of paraffinembedded Human cervical cancer tissue using (HPSE2 Antibody) at dilution 1/30, on the right is treated with synthetic peptide. (Original magnification: 200)

Background

This gene encodes a heparanase enzyme. The encoded protein is a endoglycosidase that degrades heparin sulfate proteoglycans located on the extracellular matrix and cell surface. This protein may be involved in biological processes involving remodeling of the extracellular matrix including angiogenesis and tumor progression. Alternate splicing results in multiple transcript variants.

Note: This product is for in vitro research use only