

myotubularin related protein 4 antibody

Catalog No: #22916



Orders: [order@signalwayantibody.com](mailto:order@signalwayantibody.com)  
Support: [tech@signalwayantibody.com](mailto:tech@signalwayantibody.com)

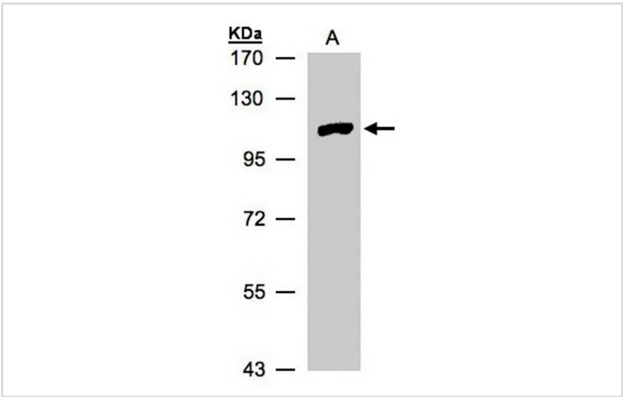
Description

|                       |  |
|-----------------------|--|
| Product Name          | myotubularin related protein 4 antibody  |
| Host Species          | Rabbit   |
| Clonality             | Polyclonal   |
| Purification          | Purified by antigen-affinity chromatography.   |
| Applications          | WB IF  |
| Species Reactivity    | Hu   |
| Immunogen Type        | Recombinant protein  |
| Immunogen Description | Recombinant protein fragment contain a sequence corresponding to a region within amino acids 281 and 548 of myotubularin related protein 4 |
| Target Name           | myotubularin related protein 4   |
| Accession No.         | NCBI Gene ID: 9110NCBI mRNA#: NM_004687NCBI Protein#: NP_004678  |
| Uniprot               | Q9NYA4   |
| GeneID                | 9110;  |
| Concentration         | 0.6mg/ml   |
| Formulation           | Supplied in 0.1M Tris-buffered saline with 10% Glycerol (pH7.0). 0.01% Thimerosal was added as a preservative.                             |
| Storage               | Store at -20°C for long term preservation (recommended). Store at 4°C for short term use.  |

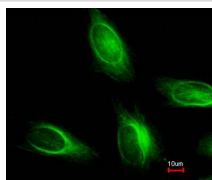
Application Details

Predicted MW: 133kd  
Western blotting: 1:500-1:3000  
Immunofluorescence: 1:100-1:200

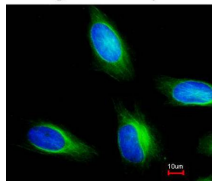
Images



Sample(30 ug whole cell lysate)  
A: HeLa S3  
7.5% SDS PAGE  
Primary antibody diluted at 1: 500



Merged with DNA probe



Immunofluorescence analysis of paraformaldehyde-fixed HeLa, using myotubularin related protein 4 antibody at 1: 200 dilution.

Note: This product is for in vitro research use only