

GAS2L3 Antibody

Catalog No: #43941

Orders: order@signalwayantibody.comSupport: tech@signalwayantibody.com

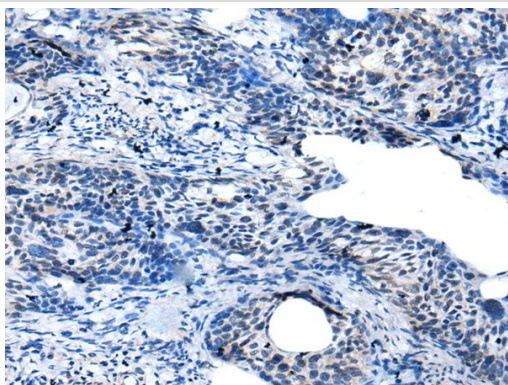
Description

Product Name	GAS2L3 Antibody
Host Species	Rabbit
Clonality	Polyclonal
Purification	Antigen affinity purification
Applications	IHC
Species Reactivity	Hu
Specificity	The antibody detects endogenous levels of total GAS2L3 protein.
Immunogen Type	peptide
Immunogen Description	Synthetic peptide of human GAS2L3
Target Name	GAS2L3
Other Names	G2L3
Accession No.	Swiss-Prot#: Q86XJ1NCBI Gene ID: 283431
Uniprot	Q86XJ1
GeneID	283431;
Concentration	0.5mg/ml
Formulation	Rabbit IgG in pH7.4 PBS, 0.05% NaN ₃ , 40% Glycerol.
Storage	Store at -20°C

Application Details

Immunohistochemistry: 1: 10-50

Images



The image on the left is immunohistochemistry of paraffin-embedded Human cervical cancer tissue using GAS2L3 Antibody at dilution 1/25, on the right is treated with synthetic peptide. (Original magnification: x200)

Background

Gas2L3 (growth arrest-specific 2 like 3) is a 694 amino acid protein that contains one calponin-homology (CH) domain and may function in a similar manner to Gas2. The gene encoding Gas2L3 maps to human chromosome 12, which encodes over 1,100 genes and comprises approximately 4.5% of the human genome. Cytoskeletal linker protein. May promote and stabilize the formation of the actin and microtubule network.

Note: This product is for in vitro research use only