

## WIPF1 Antibody

Catalog No: #43979

Orders: [order@signalwayantibody.com](mailto:order@signalwayantibody.com)Support: [tech@signalwayantibody.com](mailto:tech@signalwayantibody.com)

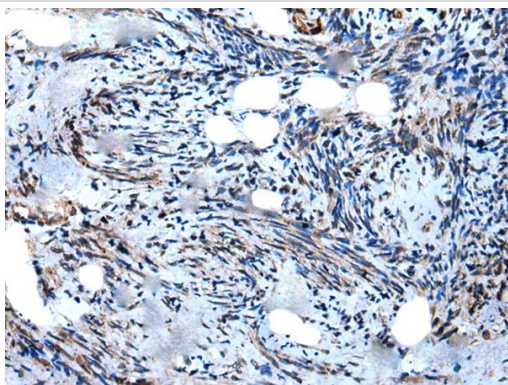
## Description

Product Name	WIPF1 Antibody
Host Species	Rabbit
Clonality	Polyclonal
Purification	Antigen affinity purification
Applications	IHC
Species Reactivity	Hu Ms
Specificity	The antibody detects endogenous levels of total WIPF1 protein.
Immunogen Type	peptide
Immunogen Description	Synthetic peptide of human WIPF1
Target Name	WIPF1
Other Names	WIP; WAS2; PRPL-2; WASPIP
Accession No.	Swiss-Prot#: O43516NCBI Gene ID: 7456
Uniprot	O43516
GeneID	7456;
Concentration	0.7mg/ml
Formulation	Rabbit IgG in pH7.4 PBS, 0.05% NaN <sub>3</sub> , 40% Glycerol.
Storage	Store at -20°C

## Application Details

Immunohistochemistry: 1: 20-100

## Images



The image on the left is immunohistochemistry of paraffin-embedded Human cervical cancer tissue using WIPF1 Antibody at dilution 1/30, on the right is treated with synthetic peptide. (Original magnification: x200)

## Background

This gene encodes a protein that plays an important role in the organization of the actin cytoskeleton. The encoded protein binds to a region of Wiskott-Aldrich syndrome protein that is frequently mutated in Wiskott-Aldrich syndrome, an X-linked recessive disorder. Impairment of the interaction between these two proteins may contribute to the disease. Two transcript variants encoding the same protein have been identified for this gene.?

---

Note: This product is for in vitro research use only