

IWS1 Antibody

Catalog No: #43981

Orders: order@signalwayantibody.comSupport: tech@signalwayantibody.com

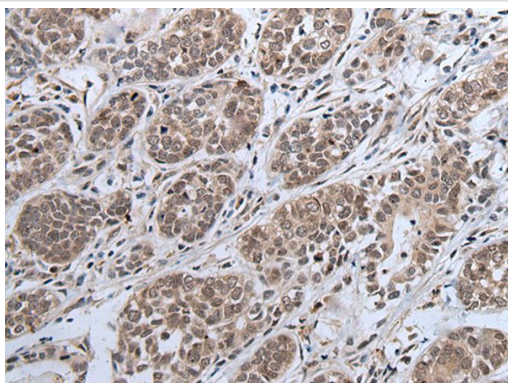
Description

Product Name	IWS1 Antibody
Host Species	Rabbit
Clonality	Polyclonal
Purification	Antigen affinity purification
Applications	IHC
Species Reactivity	Hu Rt
Specificity	The antibody detects endogenous levels of total IWS1 protein.
Immunogen Type	peptide
Immunogen Description	Synthetic peptide of human IWS1
Target Name	IWS1
Accession No.	Swiss-Prot#: Q96ST2NCBI Gene ID: 55677
Uniprot	Q96ST2
GeneID	55677;
Concentration	0.7mg/ml
Formulation	Rabbit IgG in pH7.4 PBS, 0.05% NaN ₃ , 40% Glycerol.
Storage	Store at -20°C

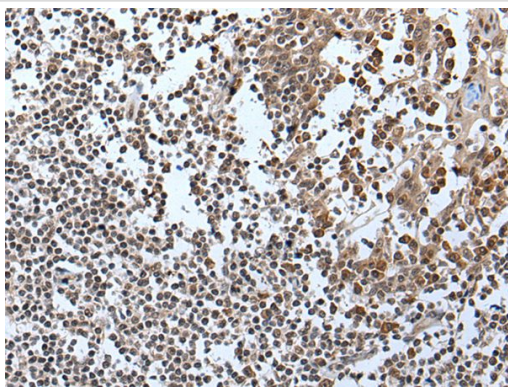
Application Details

Immunohistochemistry: 1: 20-100

Images



The image on the left is immunohistochemistry of paraffin-embedded Human esophagus cancer tissue using IWS1 Antibody at dilution 1/30, on the right is treated with synthetic peptide. (Original magnification: x200)



The image on the left is immunohistochemistry of paraffin-embedded Human tonsil tissue using IWS1 Antibody at dilution 1/30, on the right is treated with synthetic peptide. (Original magnification: x200)

Background

Transcription factor which plays a key role in defining the composition of the RNA polymerase II (RNAPII) elongation complex and in modulating the production of mature mRNA transcripts. Acts as an assembly factor to recruit various factors to the RNAPII elongation complex and is recruited to the complex via binding to the transcription elongation factor SUPT6H bound to the C-terminal domain (CTD) of the RNAPII subunit RPB1 (POLR2A). The SUPT6H:IWS1:CTD complex recruits mRNA export factors (ALYREF/THOC4, EXOSC10) as well as histone modifying enzymes (such as SETD2) to ensure proper mRNA splicing, efficient mRNA export and elongation-coupled H3K36 methylation, a signature chromatin mark of active transcription.

Note: This product is for in vitro research use only