

CELF5 Antibody

Catalog No: #43995

Orders: order@signalwayantibody.comSupport: tech@signalwayantibody.com

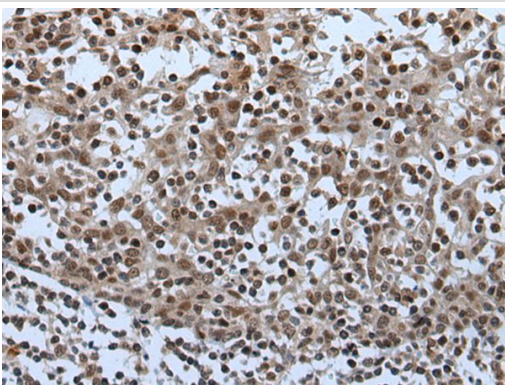
Description

Product Name	CELF5 Antibody
Host Species	Rabbit
Clonality	Polyclonal
Purification	Antigen affinity purification
Applications	IHC
Species Reactivity	Hu
Specificity	The antibody detects endogenous levels of total CELF5 protein.
Immunogen Type	peptide
Immunogen Description	Synthetic peptide of human CELF5
Target Name	CELF5
Other Names	CELF-5; BRUNOL5; BRUNOL-5
Accession No.	Swiss-Prot#: Q8N6W0NCBI Gene ID: 60680
Uniprot	Q8N6W0
GeneID	60680;
Concentration	1.6mg/ml
Formulation	Rabbit IgG in pH7.4 PBS, 0.05% NaN ₃ , 40% Glycerol.
Storage	Store at -20°C

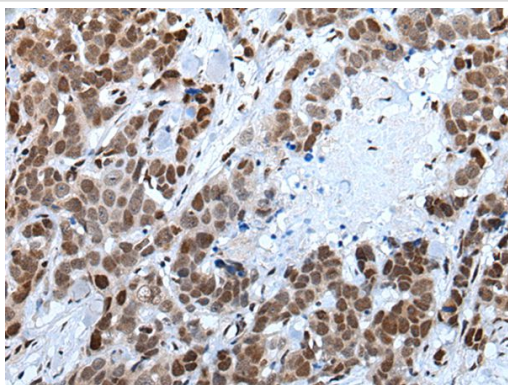
Application Details

Immunohistochemistry: 1: 100-200

Images



The image on the left is immunohistochemistry of paraffin-embedded Human tonsil tissue using CELF5 Antibody at dilution 1/100, on the right is treated with synthetic peptide. (Original magnification: x200)



The image on the left is immunohistochemistry of paraffin-embedded Human thyroid cancer tissue using CELF5 Antibody at dilution 1/100, on the right is treated with synthetic peptide. (Original magnification: x200)

Background

This gene encodes a member of the the CELF/BRUNOL protein family, which contain two N-terminal RNA recognition motif (RRM) domains, one C-terminal RRM domain, and a divergent segment of 160-230 aa between the second and third RRM domains. Members of this protein family regulate pre-mRNA alternative splicing and may also be involved in mRNA editing and translation. Alternatively spliced transcript variants have been found for this gene.

Note: This product is for in vitro research use only