

## SHARP2 antibody

Catalog No: #22931

Orders: [order@signalwayantibody.com](mailto:order@signalwayantibody.com)Support: [tech@signalwayantibody.com](mailto:tech@signalwayantibody.com)

## Description

|                       |  |
|-----------------------|--|
| Product Name          | SHARP2 antibody  |
| Host Species          | Rabbit   |
| Clonality             | Polyclonal   |
| Purification          | Purified by antigen-affinity chromatography.   |
| Applications          | WB IF  |
| Species Reactivity    | Hu   |
| Immunogen Type        | Peptide  |
| Immunogen Description | Synthetic peptide contain a sequence corresponding to a region within amino acids 1 and 51 of SHARP2           |
| Target Name           | SHARP2   |
| Accession No.         | Swiss-Prot:O14503Gene ID:8553  |
| Uniprot               | O14503   |
| GeneID                | 8553;  |
| Concentration         | 0.2mg/ml   |
| Formulation           | Supplied in 0.1M Tris-buffered saline with 10% Glycerol (pH7.0). 0.01% Thimerosal was added as a preservative. |
| Storage               | Store at -20°C for long term preservation (recommended). Store at 4°C for short term use.                      |

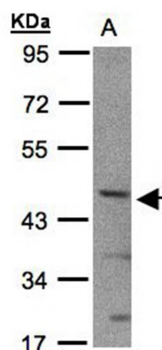
## Application Details

Predicted MW: 46kd

Western blotting: 1:500-1:3000

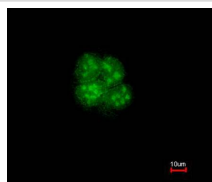
Immunofluorescence: 1:100-1:200

## Images

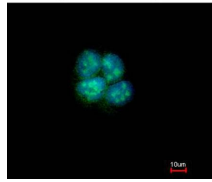


Sample(30 ug whole cell lysate)  
A: 293T  
10% SDS PAGE  
Primary antibody diluted at 1: 1000

Immunofluorescence analysis of paraformaldehyde-fixed A431, using SHARP2 antibody at 1: 200 dilution.



Merged with DNA probe



## Background

This gene encodes a basic helix-loop-helix protein expressed in various tissues. Expression in the chondrocytes is responsive to the addition of Bt2cAMP. The encoded protein is believed to be involved in the control of cell differentiation. [provided by RefSeq]

Note: This product is for in vitro research use only