

Protein S antibody

Catalog No: #22939



Orders: [order@signalwayantibody.com](mailto:order@signalwayantibody.com)  
Support: [tech@signalwayantibody.com](mailto:tech@signalwayantibody.com)

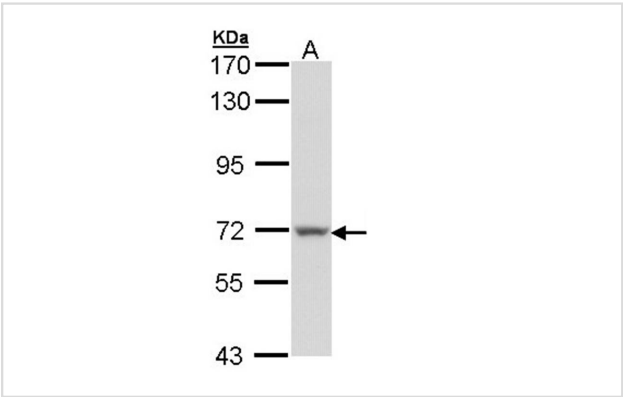
Description

Product Name	Protein S antibody
Host Species	Rabbit
Clonality	Polyclonal
Purification	Purified by antigen-affinity chromatography.
Applications	WB IF
Species Reactivity	Hu
Immunogen Type	Recombinant protein
Immunogen Description	Recombinant protein fragment contain a sequence corresponding to a region within amino acids 209 and 447 of Human PROS1
Target Name	Protein S
Accession No.	Swiss-Prot:P07225Gene ID:5627
Uniprot	P07225
GeneID	5627;
Concentration	0.9mg/ml
Formulation	Supplied in 0.1M Tris-buffered saline with 10% Glycerol (pH7.0). 0.01% Thimerosal was added as a preservative.
Storage	Store at -20°C for long term preservation (recommended). Store at 4°C for short term use.

Application Details

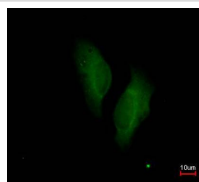
Predicted MW: 75kd
Western blotting: 1:500-1:3000
Immunofluorescence: 1:100-1:200

Images

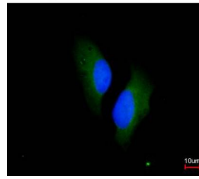


Sample (30 ug of whole cell lysate)  
A: 293T  
7.5% SDS PAGE  
Primary antibody diluted at 1: 1000

Immunofluorescence analysis of paraformaldehyde-fixed HeLa, using protein S (alpha) antibody at 1: 200 dilution.



Merged with DNA probe



## Background

This gene encodes a vitamin K-dependent plasma protein that functions as a cofactor for the anticoagulant protease, activated protein C (APC) to inhibit blood coagulation. It is found in plasma in both a free, functionally active form and also in an inactive form complexed with C4b-binding protein. Mutations in this gene result in autosomal dominant hereditary thrombophilia. An inactive pseudogene of this locus is located at an adjacent region on chromosome 3. [provided by RefSeq]

Note: This product is for in vitro research use only