

DNA ligase 3 antibody

Catalog No: #22940



Orders: order@signalwayantibody.com
Support: tech@signalwayantibody.com

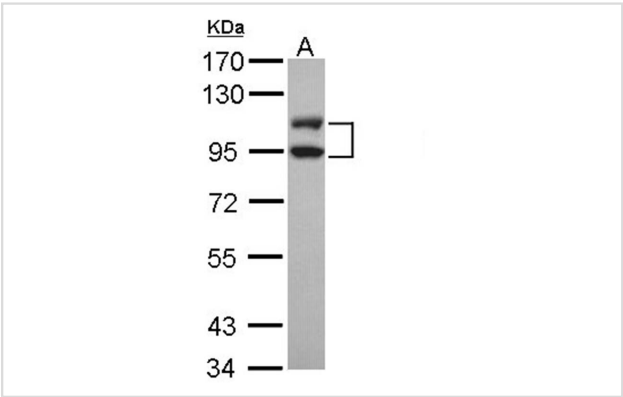
Description

Product Name	DNA ligase 3 antibody
Host Species	Rabbit
Clonality	Polyclonal
Purification	Purified by antigen-affinity chromatography.
Applications	WB IHC
Species Reactivity	Hu
Immunogen Type	Recombinant protein
Immunogen Description	Recombinant protein fragment contain a sequence corresponding to a region within amino acids 116 and 403 of DNA ligase 3
Target Name	DNA ligase 3
Accession No.	Swiss-Prot:P49916Gene ID:3980
Uniprot	P49916
GeneID	3980;
Concentration	1mg/ml
Formulation	Supplied in 0.1M Tris-buffered saline with 20% Glycerol (pH7.0). 0.01% Thimerosal was added as a preservative.
Storage	Store at -20°C for long term preservation (recommended). Store at 4°C for short term use.

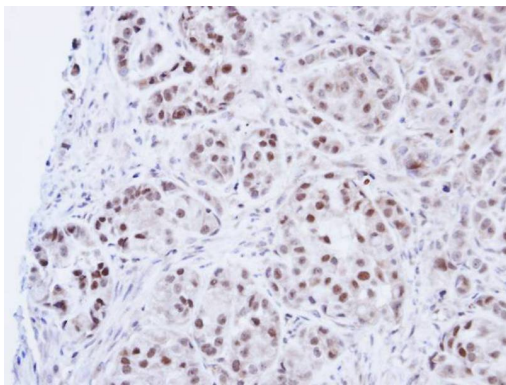
Application Details

Predicted MW: 113kd
Western blotting: 1:500-1:3000
Immunohistochemistry: 1:100-1:250

Images



Sample (30 ug of whole cell lysate)
A: Hep G2
7.5% SDS PAGE
Primary antibody diluted at 1: 1000



Immunohistochemical analysis of paraffin-embedded A549 Xenograft, using DNA ligase 3 antibody at 1: 100 dilution.

Background

This gene is a member of the DNA ligase family. Each member of this family encodes a protein that catalyzes the joining of DNA ends but they each have a distinct role in DNA metabolism. The protein encoded by this gene is involved in excision repair and is located in both the mitochondria and nucleus, with translation initiation from the upstream start codon allowing for transport to the mitochondria and translation initiation from a downstream start codon allowing for transport to the nucleus. Additionally, alternate transcriptional splice variants, encoding different isoforms, have been characterized. [provided by RefSeq]

Note: This product is for in vitro research use only