

IL16 antibody

Catalog No: #22941



Orders: order@signalwayantibody.com
Support: tech@signalwayantibody.com

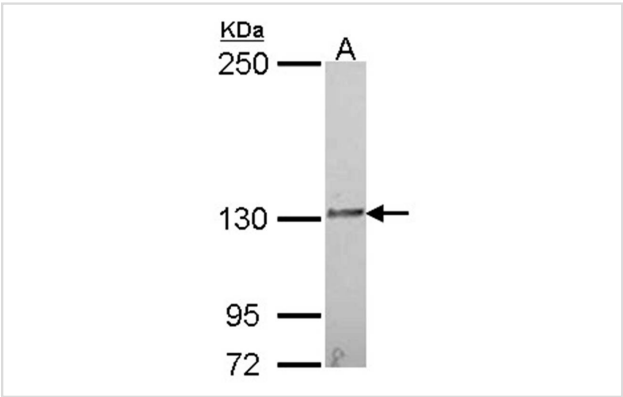
Description

Product Name	IL16 antibody
Host Species	Rabbit
Clonality	Polyclonal
Purification	Purified by antigen-affinity chromatography.
Applications	WB IF
Species Reactivity	Hu
Immunogen Type	Peptide
Immunogen Description	Synthetic peptide contain a sequence corresponding to a region within amino acids 1268 and 1332 of IL16
Target Name	IL16
Other Names	FLJ16806; FLJ42735; FLJ44234; HsT19289; IL-16; LCF; prIL-16
Accession No.	Swiss-Prot:Q14005Gene ID:3603
Uniprot	Q14005
GeneID	3603;
Concentration	0.7mg/ml
Formulation	Supplied in 0.1M Tris-buffered saline with 10% Glycerol (pH7.0). 0.01% Thimerosal was added as a preservative.
Storage	Store at -20°C for long term preservation (recommended). Store at 4°C for short term use.

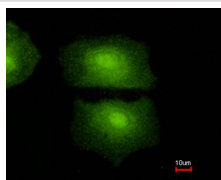
Application Details

Predicted MW: 142kd
Western blotting: 1:500-1:3000
Immunofluorescence: 1:100-1:200

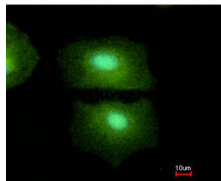
Images



Sample (30 ug of whole cell lysate)
A: A549
5% SDS PAGE
IL16 antibody diluted at 1: 1000



Costained with Hoechst 33342



Immunofluorescence analysis of methanol-fixed A549, using IL16 antibody at 1: 500 dilution.

Background

The protein encoded by this gene is a pleiotropic cytokine that functions as a chemoattractant, a modulator of T cell activation, and an inhibitor of HIV replication. The signaling process of this cytokine is mediated by CD4. The product of this gene undergoes proteolytic processing, which is found to yield two functional proteins. The cytokine function is exclusively attributed to the secreted C-terminal peptide, while the N-terminal product may play a role in cell cycle control. Caspase 3 is reported to be involved in the proteolytic processing of this protein. Two transcript variants encoding different isoforms have been found for this gene. [provided by RefSeq]

Note: This product is for in vitro research use only