

Histone H3 (Mono Methyl Lys18) Polyclonal Antibody

Catalog No: #HW199

Package Size: #HW199-1 50ul #HW199-2 100ul

Orders: order@signalwayantibody.com

Support: tech@signalwayantibody.com

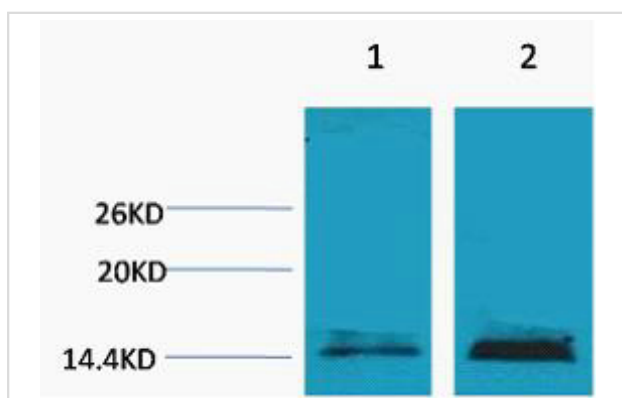
Description

Product Name	Histone H3 (Mono Methyl Lys18) Polyclonal Antibody
Host Species	Rabbit
Clonality	Polyclonal
Isotype	IgG1
Applications	WB
Species Reactivity	Hu Ms
Specificity	The antibody detects endogenous Histone H3 (Mono Methyl Lys18) protein.
Immunogen Type	Peptide
Immunogen Description	Synthetic Peptide of Histone H3 (Mono Methyl Lys18)
Target Name	Histone H3
Other Names	HIST1H3A; H3FA; HIST1H3B; H3FL; HIST1H3C; H3FC; HIST1H3D; H3FB; HIST1H3E; H3FD; HIST1H3F; H3FI; HIST1H3G; H3FH; HIST1H3H; H3FK; HIST1H3I; H3FF; HIST1H3J; H3FJ; Histone H3.1; Histone H3/a; Histone H3/b; Histone H3/c; Histone H3/d; Histone H3/f; Histone H3/h; Histone H3/i; Histone H3/j; Histone H3/k;
Accession No.	Swiss-Prot:P68431/Q71DI3/P84243Gene ID:
Uniprot	P68431
GeneID	8350;8351;8352;8353;8354;8355;8356;8357;8358;8968;
Calculated MW	15-17kd
Concentration	1mg/ml
Formulation	Liquid in PBS containing 50% glycerol, 0.5% BSA and 0.02% sodium azide.
Storage	Store at -20°C/1 year

Application Details

Western blotting: 1:200-1:500

Images



Western blot analysis of 1) Hela, 2) 3T3, diluted at 1:1000.

Note: This product is for in vitro research use only