

## beta-Adaptin antibody

Catalog No: #22945

Orders: [order@signalwayantibody.com](mailto:order@signalwayantibody.com)Support: [tech@signalwayantibody.com](mailto:tech@signalwayantibody.com)

## Description

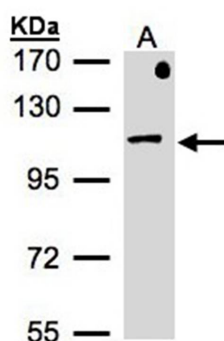
Product Name	beta-Adaptin antibody
Host Species	Rabbit
Clonality	Polyclonal
Purification	Purified by antigen-affinity chromatography.
Applications	WB
Species Reactivity	Hu Ms
Immunogen Type	Recombinant protein
Immunogen Description	Recombinant protein fragment contain a sequence corresponding to a region within amino acids 384 and 579 of beta-Adaptin
Target Name	beta-Adaptin
Accession No.	Swiss-Prot:Q10567Gene ID:162
Uniprot	Q10567
GeneID	162;
Concentration	0.6mg/ml
Formulation	Supplied in 0.1M Tris-buffered saline with 10% Glycerol (pH7.0). 0.01% Thimerosal was added as a preservative.
Storage	Store at -20°C for long term preservation (recommended). Store at 4°C for short term use.

## Application Details

Predicted MW: 105kd

Western blotting: 1:500-1:3000

## Images



Sample(30 ug of whole cell lysate)  
A: MOLT4  
7.5% SDS PAGE  
Primary antibody diluted at 1: 500

## Background

Adaptor protein complex 1 is found at the cytoplasmic face of coated vesicles located at the Golgi complex, where it mediates both the recruitment of clathrin to the membrane and the recognition of sorting signals within the cytosolic tails of transmembrane receptors. This complex is a heterotetramer

composed of two large, one medium, and one small adaptin subunit. The protein encoded by this gene serves as one of the large subunits of this complex and is a member of the adaptin protein family. This gene is a candidate meningioma gene. Two transcript variants encoding different isoforms have been found for this gene, and variants utilizing alternative polyadenylation signals exist. [provided by RefSeq]

---

Note: This product is for in vitro research use only