

ILK-1 (Phospho-Ser343) Antibody

Catalog No: #12444



Package Size: #12444-1 50ul #12444-2 100ul

Orders: order@signalwayantibody.com
Support: tech@signalwayantibody.com

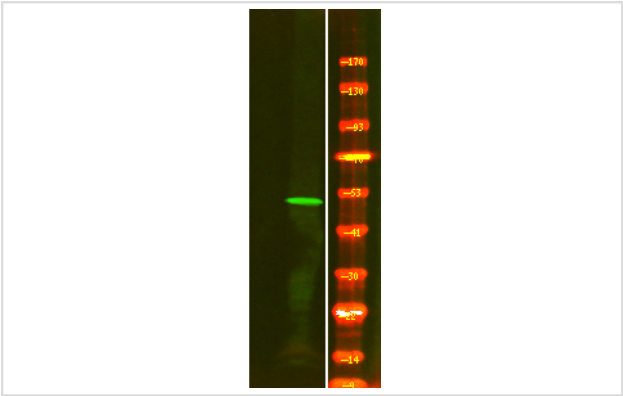
Description

| | |
|-----------------------|---|
| Product Name | ILK-1 (Phospho-Ser343) Antibody |
| Host Species | Rabbit |
| Clonality | Polyclonal |
| Purification | Antibodies were produced by immunizing rabbits with synthetic phosphopeptide and KLH conjugates. Antibodies were purified by affinity-chromatography using epitope-specific phosphopeptide. Non-phospho specific antibodies were removed by chromatography using non-phosphopeptide. |
| Applications | WB |
| Species Reactivity | Hu Ms Rt |
| Specificity | ILK-1 (Phospho-Ser343) Antibody detects endogenous levels of ILK-1 only when phosphorylated at Ser343 |
| Immunogen Type | Peptide |
| Immunogen Description | A synthesized peptide derived from human ILK-1 (Phospho-Ser343) |
| Target Name | ILK-1 |
| Modification | Phospho |
| Other Names | ILK-1 (Phospho-Ser343) Antibody |
| Accession No. | Swiss-Prot#: Q13418NCBI Gene ID: 3611 |
| Uniprot | Q13418 |
| GeneID | 3611; |
| Target Species | human |
| Calculated MW | 51kd |
| Concentration | 1.0mg/ml |
| Formulation | Liquid in PBS containing 50% glycerol, 0.5% BSA and 0.02% sodium azide. |
| Storage | Store at -20°C |

Application Details

Western blotting: 1:1000

Images



Western Blot analysis of lysates of HEK-293 cell (Left) and HEK-293 cell Serum-free treated (Right), using primary antibody at 1:1000 dilution.

Note: This product is for in vitro research use only