

MAP4 (Phospho-Ser696) Antibody

Catalog No: #12448



Package Size: #12448-1 50ul #12448-2 100ul

Orders: order@signalwayantibody.comSupport: tech@signalwayantibody.com

Description

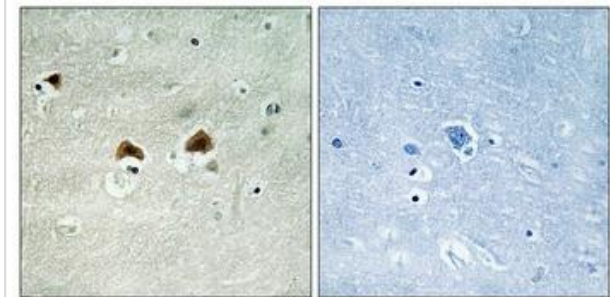
Product Name	MAP4 (Phospho-Ser696) Antibody
Host Species	Rabbit
Clonality	Polyclonal
Purification	The antibody was affinity-purified from rabbit antiserum by affinity-chromatography using epitope-specific immunogen.
Applications	IHC IF
Species Reactivity	Hu Ms Rt
Specificity	MAP4 (Phospho-Ser696) Antibody detects endogenous levels of MAP4 only when phosphorylated at Ser696
Immunogen Type	Peptide
Immunogen Description	The antiserum was produced against synthesized peptide derived from human MAP4 around the phosphorylation site of Ser696.
Target Name	MAP4
Modification	Phospho
Other Names	MAP4, MAP-4
Accession No.	Swiss-Prot#: P27816NCBI Gene ID: 4134
Uniprot	P27816
GeneID	4134;
Target Species	human
Calculated MW	121kd
Concentration	1.0mg/ml
Formulation	Liquid in PBS containing 50% glycerol, 0.5% BSA and 0.02% sodium azide.
Storage	Store at -20°C

Application Details

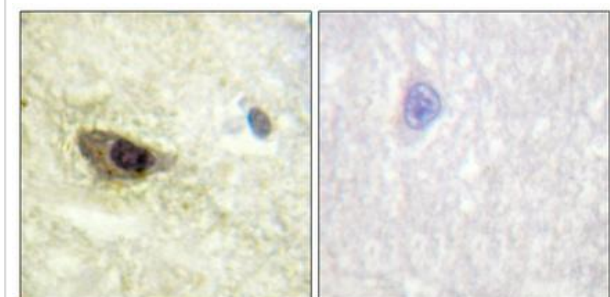
IHC 1:100-1:300

IF 1:200-1:1000

Images



Immunohistochemical analysis of paraffin-embedded Human brain. Antibody was diluted at 1:100(4° overnight). High-pressure and temperature Tris-EDTA,pH8.0 was used for antigen retrieval. Negative ctrl (right) obtained from antibody was pre-absorbed by immunogen peptide.



Immunohistochemical analysis of paraffin-embedded Human brain. Antibody was diluted at 1:100(4° overnight). High-pressure and temperature Tris-EDTA,pH8.0 was used for antigen retrieval. Negative ctrl (right) obtained from antibody was pre-absorbed by immunogen peptide.

Note: This product is for in vitro research use only