

L-plastin (Phospho-Ser5) Antibody

Catalog No: #12455

Package Size: #12455-1 50ul #12455-2 100ul

Orders: order@signalwayantibody.comSupport: tech@signalwayantibody.com

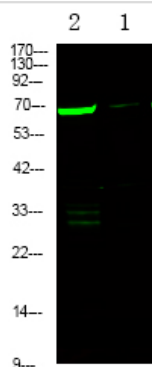
Description

Product Name	L-plastin (Phospho-Ser5) Antibody
Host Species	Rabbit
Clonality	Polyclonal
Purification	Antibodies were produced by immunizing rabbits with synthetic phosphopeptide and KLH conjugates. Antibodies were purified by affinity-chromatography using epitope-specific phosphopeptide. Non-phospho specific antibodies were removed by chromatography using non-phosphopeptide.
Applications	WB
Species Reactivity	Hu
Specificity	L-plastin (Phospho-Ser5) Antibody detects endogenous levels of L-plastin only when phosphorylated at Ser5
Immunogen Type	Peptide
Immunogen Description	A synthesized peptide derived from human L-plastin (Phospho-Ser5)
Target Name	L-plastin
Modification	Phospho
Other Names	LCP1, CP64, L Plastin, LCP-1, LC64P, Lymphocyte cytosolic protein 1, PLS2, L-PLASTIN, Plastin 2, Plastin-2
Accession No.	Swiss-Prot#: P13796NCBI Gene ID: 3936
Uniprot	P13796
GeneID	3936;
Target Species	human
Calculated MW	70kd
Concentration	1.0mg/ml
Formulation	Liquid in PBS containing 50% glycerol, 0.5% BSA and 0.02% sodium azide.
Storage	Store at -20°C

Application Details

Western blotting: 1:1000

Images



Western Blot analysis of lysates of 1. K562 cell and 2. K562 cell treated with 100ng/mL LPS for 30min, using primary antibody at 1:1000 dilution.

Note: This product is for in vitro research use only