

## FKHRL1 (Phospho-Ser315) Antibody

Catalog No: #12475



Package Size: #12475-1 50ul #12475-2 100ul

Orders: [order@signalwayantibody.com](mailto:order@signalwayantibody.com)Support: [tech@signalwayantibody.com](mailto:tech@signalwayantibody.com)

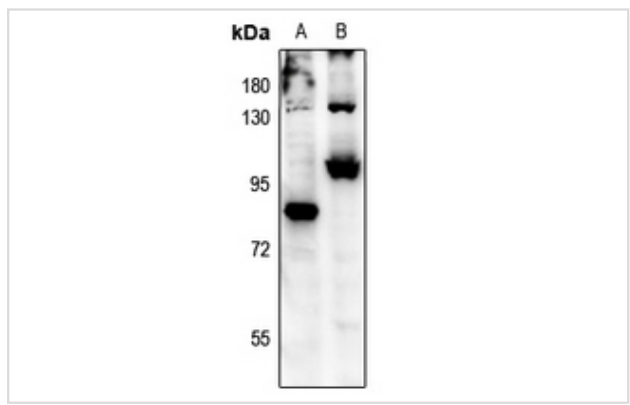
## Description

Product Name	FKHRL1 (Phospho-Ser315) Antibody
Host Species	Rabbit
Clonality	Polyclonal
Purification	Antibodies were produced by immunizing rabbits with synthetic phosphopeptide and KLH conjugates. Antibodies were purified by affinity-chromatography using epitope-specific phosphopeptide. Non-phospho specific antibodies were removed by chromatography using non-phosphopeptide.
Applications	WB
Species Reactivity	Hu Ms Rt
Specificity	FKHRL1 (Phospho-Ser315) Antibody detects endogenous levels of FKHRL1 only when phosphorylated at Ser315
Immunogen Type	Peptide
Immunogen Description	A synthesized peptide derived from human FKHRL1 (Phospho-Ser315)
Target Name	FKHRL1
Modification	Phospho
Other Names	FOXO3, AF6q21, AF6q21 protein, Forkhead box O3, Forkhead box O3A, FOXO3A, FKHRL1P2, Forkhead box protein O3, FOXO2, FKHRL1
Accession No.	Swiss-Prot#: O43524NCBI Gene ID: 2309
Uniprot	O43524
GeneID	2309;
Target Species	human
Calculated MW	97kd
Concentration	1.0mg/ml
Formulation	Liquid in 0.42% Potassium phosphate, 0.87% Sodium chloride, pH 7.3, 30% glycerol, and 0.01% sodium azide.
Storage	Store at -20°C

## Application Details

WB (1/500 - 1/1000)

## Images



Western blot analysis of FOXO3 (pS315) expression in HeLa (A), NIH3T3 (B) whole cell lysates.

Note: This product is for in vitro research use only