

## BRK (Phospho-Tyr342) Antibody

Catalog No: #12490



Package Size: #12490-1 50ul #12490-2 100ul

Orders: [order@signalwayantibody.com](mailto:order@signalwayantibody.com)Support: [tech@signalwayantibody.com](mailto:tech@signalwayantibody.com)

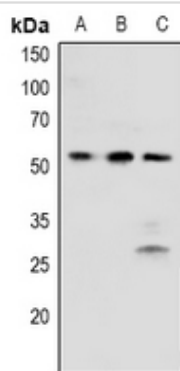
## Description

Product Name	BRK (Phospho-Tyr342) Antibody
Host Species	Rabbit
Clonality	Polyclonal
Purification	Antibodies were produced by immunizing rabbits with synthetic phosphopeptide and KLH conjugates. Antibodies were purified by affinity-chromatography using epitope-specific phosphopeptide. Non-phospho specific antibodies were removed by chromatography using non-phosphopeptide.
Applications	WB
Species Reactivity	Hu
Specificity	BRK (Phospho-Tyr342) Antibody detects endogenous levels of BRK only when phosphorylated at Tyr342
Immunogen Type	Peptide
Immunogen Description	A synthesized peptide derived from human BRK (Phospho-Tyr342)
Target Name	BRK
Modification	Phospho
Other Names	PTK6, BRK, SIK, Src-related intestinal kinase, Tks, Tyrosine-protein kinase BRK, Breast tumor kinase, Protein-tyrosine kinase 6, Protein-tyrosine kinase BRK, PTK6 protein tyrosine kinase 6
Accession No.	Swiss-Prot#: Q13882NCBI Gene ID: 5753
Uniprot	Q13882
GeneID	5753;
Target Species	human
Calculated MW	52kd
Concentration	1.0mg/ml
Formulation	Liquid in 0.42% Potassium phosphate, 0.87% Sodium chloride, pH 7.3, 30% glycerol, and 0.01% sodium azide.
Storage	Store at -20°C

## Application Details

Western blotting: 1:1000

## Images



Western blot analysis of BRK (Phospho-Tyr342) expression in HEK293T (A), HCT116 (B), NIH3T3 (C) whole cell lysates.

Note: This product is for in vitro research use only