

CAMKK1/2 (Phospho-Ser458/495) Antibody

Catalog No: #12492



Package Size: #12492-1 50ul #12492-2 100ul

Orders: order@signalwayantibody.comSupport: tech@signalwayantibody.com

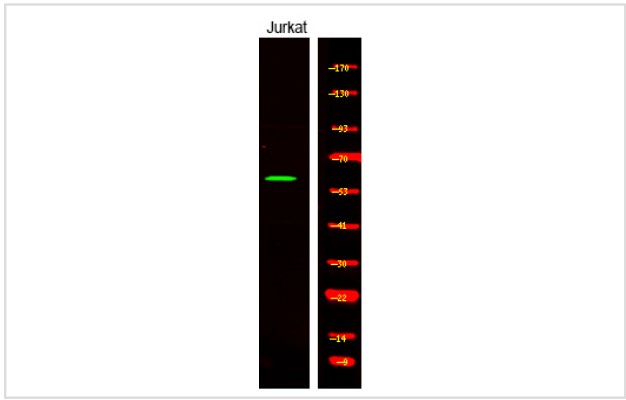
Description

| | |
|-----------------------|---|
| Product Name | CAMKK1/2 (Phospho-Ser458/495) Antibody |
| Host Species | Rabbit |
| Clonality | Polyclonal |
| Purification | Antibodies were produced by immunizing rabbits with synthetic phosphopeptide and KLH conjugates. Antibodies were purified by affinity-chromatography using epitope-specific phosphopeptide. Non-phospho specific antibodies were removed by chromatography using non-phosphopeptide. |
| Applications | WB |
| Species Reactivity | Hu Ms Rt |
| Specificity | CAMKK1/2 (Phospho-Ser458/495) Antibody detects endogenous levels of CAMKK1/2 only when phosphorylated at Ser458/495 |
| Immunogen Type | Peptide |
| Immunogen Description | A synthesized peptide derived from human CAMKK1/2 (Phospho-Ser458/495) |
| Target Name | CAMKK1/2 |
| Modification | Phospho |
| Other Names | CAMKK1, CaM-kinase IV kinase, CaM-kinase kinase 1, CaM-kinase kinase alpha, CAMKK alpha protein, CAMKKA, CaM-KK 1, CaMKK, CaM-KK alpha, CaMKK 1, CaMKK alpha, CAMKKalpha |
| Accession No. | Swiss-Prot#: Q8N5S9/Q96RR4NCBI Gene ID: 84254/10645 |
| Uniprot | Q8N5S9 |
| GeneID | 84254; |
| Target Species | human |
| Calculated MW | 64kd |
| Concentration | 1.0mg/ml |
| Formulation | Liquid in PBS containing 50% glycerol, 0.5% BSA and 0.02% sodium azide. |
| Storage | Store at -20°C |

Application Details

Western blotting: 1:1000

Images



Western Blot analysis of lysates of Jurkat cell, using primary antibody at 1:1000 dilution.

Note: This product is for in vitro research use only