

LATS1/2 (Phospho-Ser909/872) Antibody

Catalog No: #12514

Orders: order@signalwayantibody.comSupport: tech@signalwayantibody.com

Description

Product Name	LATS1/2 (Phospho-Ser909/872) Antibody
Host Species	Rabbit
Clonality	Polyclonal
Purification	The antibody was affinity-purified from rabbit serum by affinity-chromatography using specific immunogen.
Applications	WB IHC
Species Reactivity	Hu Ms Rt
Specificity	LATS1/2 (Phospho-Ser909/872) Antibody detects endogenous levels of LATS1/2 only when phosphorylated at Ser909/872
Immunogen Type	Peptide
Immunogen Description	A synthesized peptide derived from human LATS1/2 (Phospho-Ser909/872)
Target Name	LATS1/2
Modification	Phospho
Other Names	LATS1, H-warts, Large tumor suppressor 1, WARTS protein kinase, WARTS, WTS
Accession No.	Swiss-Prot#: O95835/Q9NRM7NCBI Gene ID: 9113/26524
Uniprot	O95835
GeneID	9113;
Target Species	human
Calculated MW	140kDa
Concentration	1.0mg/ml
Formulation	Liquid in PBS containing 50% glycerol, 0.5% BSA and 0.02% sodium azide.
Storage	Store at -20°C

Application Details

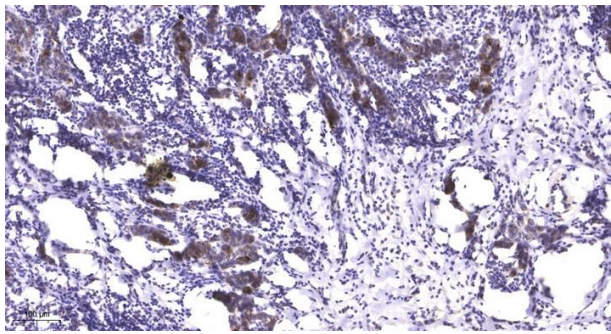
WB 1:500-2000

IHC 1:50-300

Images



Western Blot analysis of Hela treated or untreated by LPS lysis, using primary antibody at 1:1000 dilution



Immunohistochemical analysis of paraffin-embedded human Breast cancer. 1, Antibody was diluted at 1:200(4° overnight). 2, Tris-EDTA,pH9.0 was used for antigen retrieval. 3,Secondary antibody was diluted at 1:200(room temperature, 45min).

Note: This product is for in vitro research use only