

LKB1 (Phospho-Ser334) Antibody

Catalog No: #12515



Package Size: #12515-1 50ul #12515-2 100ul

Orders: [order@signalwayantibody.com](mailto:order@signalwayantibody.com)  
Support: [tech@signalwayantibody.com](mailto:tech@signalwayantibody.com)

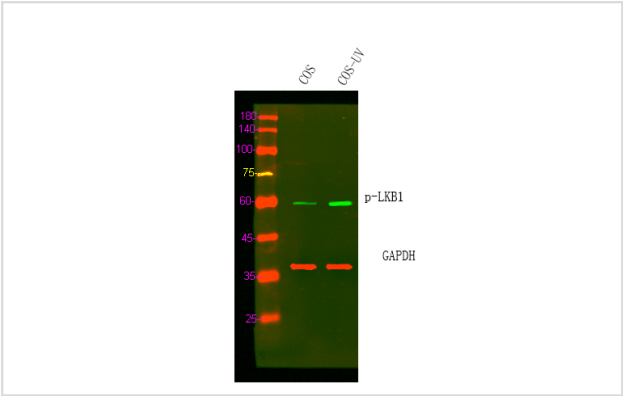
Description

Product Name	LKB1 (Phospho-Ser334) Antibody
Host Species	Rabbit
Clonality	Polyclonal
Purification	Antibodies were produced by immunizing rabbits with synthetic phosphopeptide and KLH conjugates. Antibodies were purified by affinity-chromatography using epitope-specific phosphopeptide. Non-phospho specific antibodies were removed by chromatography using non-phosphopeptide.
Applications	WB
Species Reactivity	Hu Ms Rt
Specificity	LKB1 (Phospho-Ser334) Antibody detects endogenous levels of LKB1 only when phosphorylated at Ser334
Immunogen Type	Peptide
Immunogen Description	A synthesized peptide derived from human LKB1 (Phospho-Ser334)
Target Name	LKB1
Modification	Phospho
Other Names	STK11, HLKB1, Peutz-Jeghers syndrome, PJS, Serine/threonine kinase 11, Liver kinase B1, LKB1
Accession No.	Swiss-Prot#: Q15831NCBI Gene ID: 6794
Uniprot	Q15831
GeneID	6794;
Target Species	human
Calculated MW	65kd
Concentration	1.0mg/ml
Formulation	Liquid in PBS containing 50% glycerol, 0.5% BSA and 0.02% sodium azide.
Storage	Store at -20°C

Application Details

Western blotting: 1:1000

Images



Western Blot analysis of COS cell lysis treated by UV. Primary Antibody was diluted at 1:1000. Secondary antibody(catalog#:RS23920) was diluted at 1:10000

---

Note: This product is for in vitro research use only